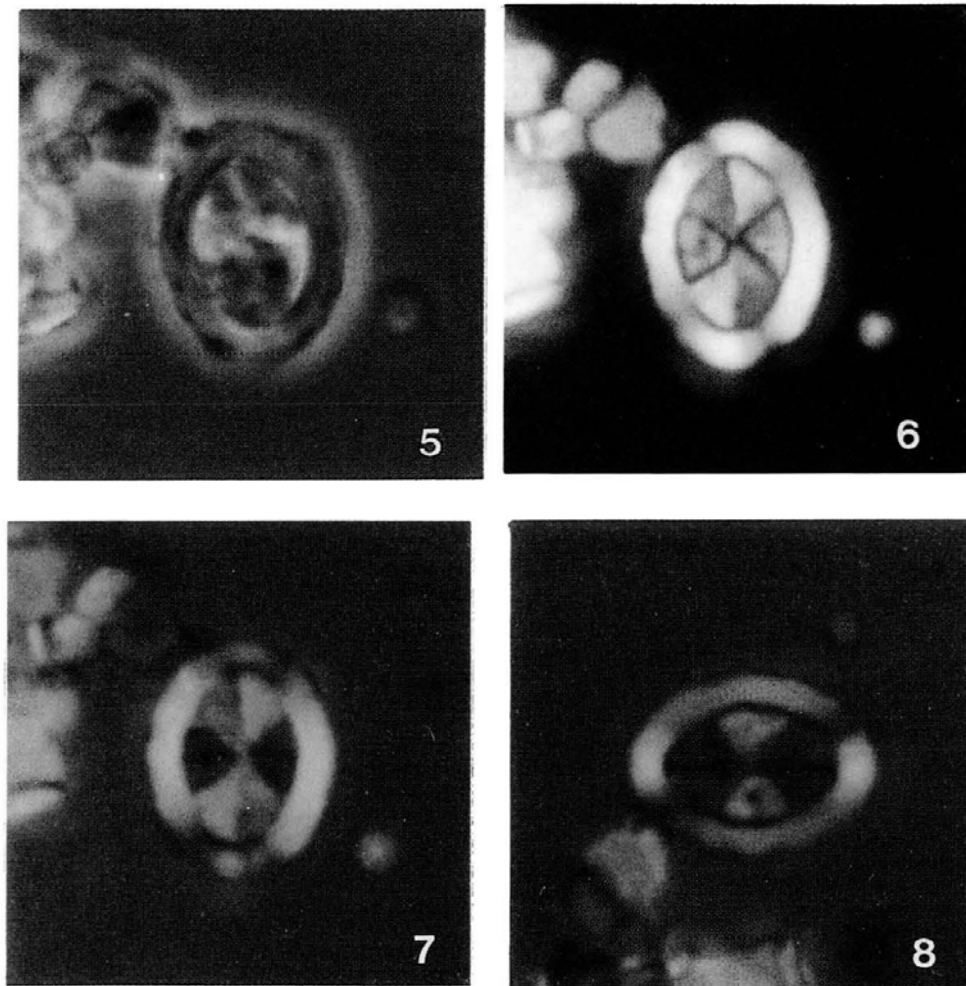


8. *Arkhangelskiella cymbiformis* Vekshina (1959) var. N Varol (1989)



Pl. 1, figs 5-8

This is the narrow shield variation. The width of the shield is less than $2\mu\text{m}$. This variant is also present throughout Campanian to Maastrichtian sediments but becomes common to abundant between the extinction of *Bifidolithus geminicatillus* Varol (in prep.) and the middle part of the range of *Nephrolithus frequens*.

Varol, O., 1989. Quantitative analysis of the *Arkhangelskiella cymbiformis* Group and Biostratigraphic usefulness in the North Sea Area. *Journal of Micropalaeontology*, **8(2)**: 131-134.