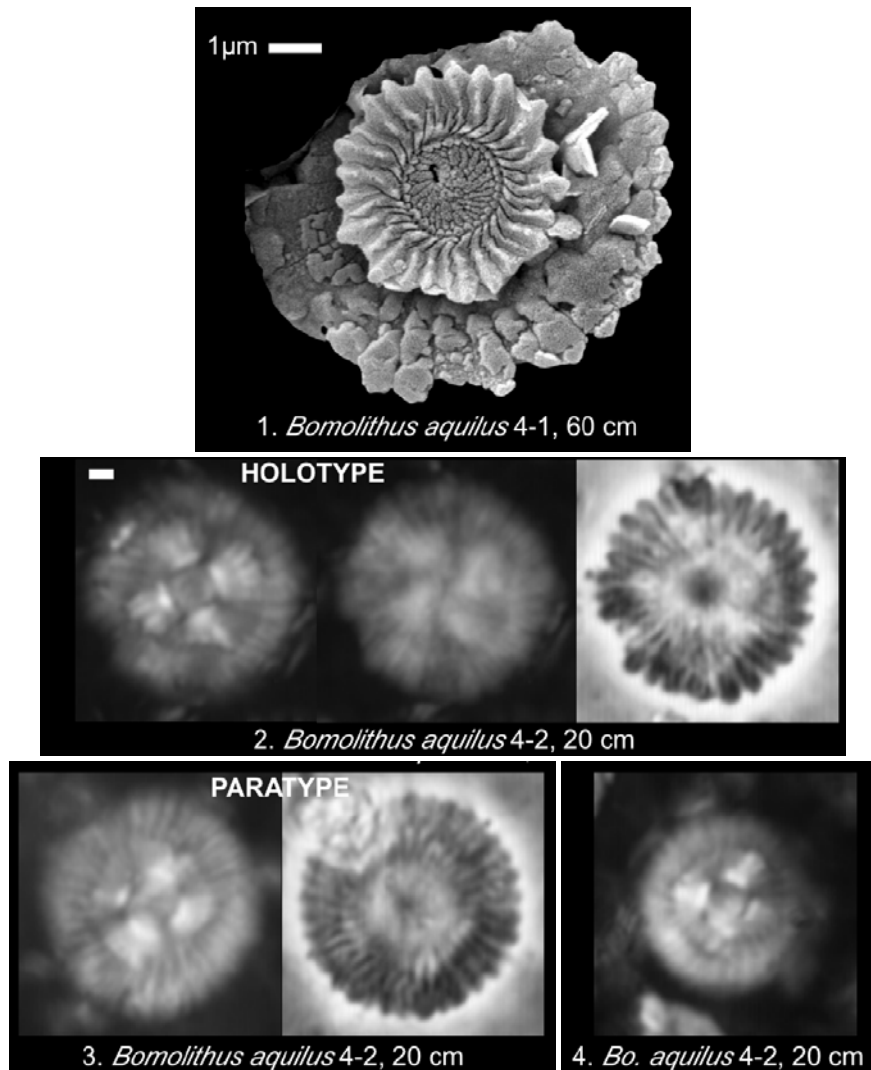


8. *Bomolithus aquilus* Bown (2010)



Pl. 10, figs 1-4

Derivation of name: From '*aquilus*', meaning 'dark-coloured', referring to the LM appearance of this nannofossil.

Diagnosis: Medium-sized, circular heliolith with at least two discernible cycles in the LM, both of which are dark in XPL. The cycles comprise around 40 visible radial elements, and the central area is typically closed.

Differentiation: Distinguished from other *Heliolithus* and *Bomolithus* species by the absence of a birefringent cycle.

Dimensions: D = 8.2-9.0µm.

Holotype: Pl. 10, fig. 2.

Paratype: Pl. 10, fig. 3.

Type locality: TDP Site 14, Pande, Tanzania.

Type level: Upper Paleocene, Sample TDP14/4-2, 20cm (NP9b).

Occurrence: NP9b, above the PETM CIE; TDP Sites 7, 14.

Bown, P.R., 2010. Calcareous nannofossils from the Paleocene/Eocene Thermal Maximum interval of southern Tanzania (TDP Site 14). *Journal of Nannoplankton Research*, **31 (1)**: 11-38.