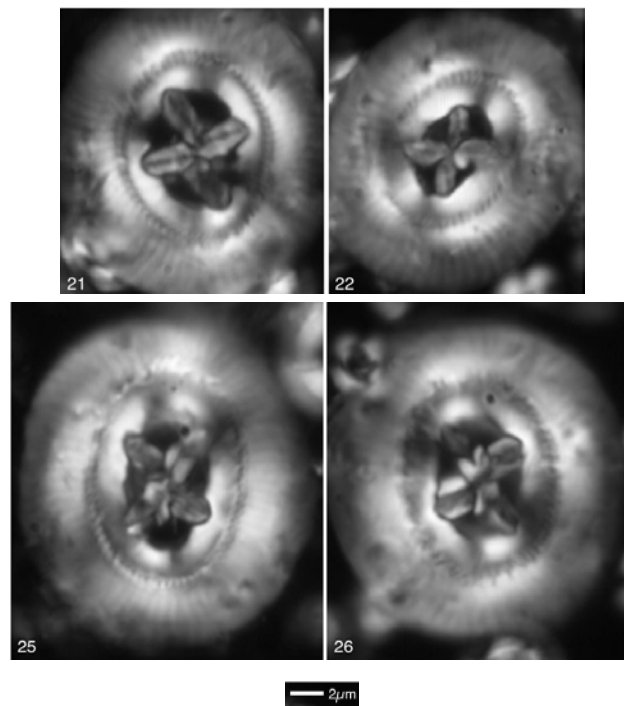
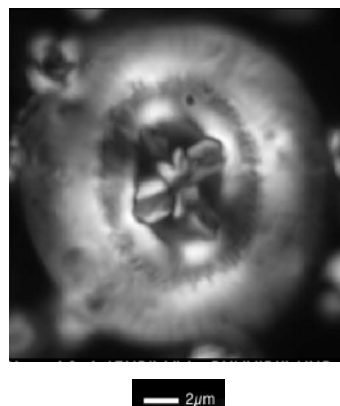


24. *Coccolithus gigas* Bramlette & Sullivan (1961) emend. Bown & Newsam (2017)



Pl. 3, figs 21, 22, 25, 26

Figs 21, 22. 1408B-22-2. Fig. 25. 1410A-18-CC. Fig. 26. 1409A-9-CC.



Pl. 12, fig. 7

Fig. 7. 1409A-8-CC.

Emended diagnosis: Very large *Coccolithus* with narrow to moderately wide central area spanned by thick crossbars which are diagonal or near diagonal in orientation, making an angle of 30° or greater with the longitudinal axis.

Differentiation: Distinguished from *Coccolithus* cf. *C. gigas* by bar angles that are rotated greater than 30° from the longitudinal axis. Typically the longitudinal bar is closer to axial than diagonal in *Coccolithus* cf. *C. gigas*.

Occurrence: Subzone 15b.

Bown, P.R. & Newsam, C., 2017. Calcareous nannofossils from the Eocene North Atlantic Ocean (IODP Expedition 342 Sites U1403–1411). *Journal of Nannoplankton Research*, **37(1)**: 25–60.