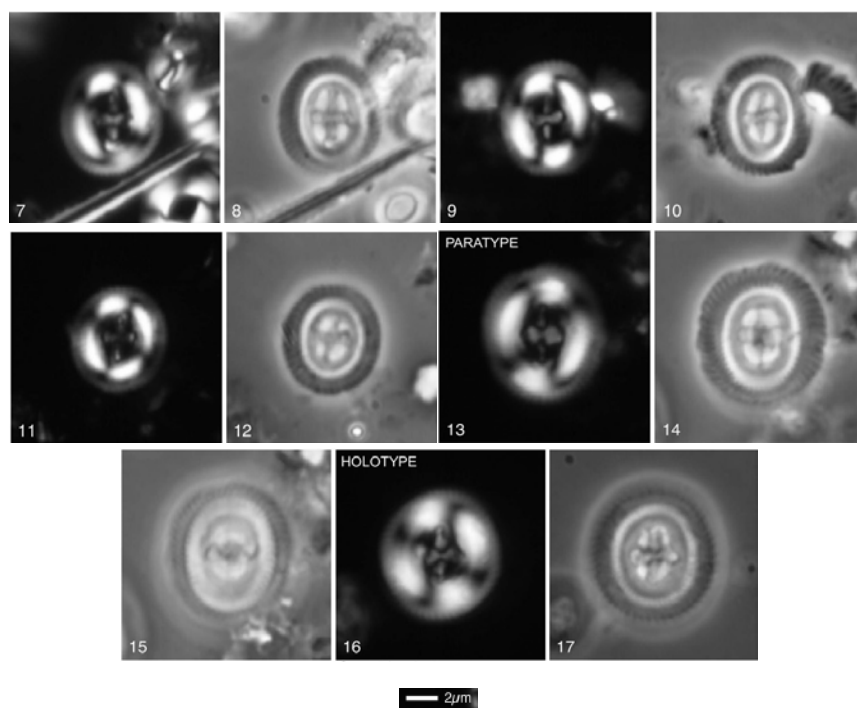


25. *Coccolithus hulliae* Bown & Newsam (2017)



Pl. 4, figs 7–17

Figs 7-10. 1407B-8-CC. Figs 11-12. 1409A-11-CC. Figs 13-15. 1407B-8-CC. Figs 16-17. 1407B-8-CC.

Derivation of name: Named after Celli Hull (University of Yale, USA), Exp. 342 shipboard scientist, micropalaeontologist and palaeoceanographer.

Diagnosis: Broadly elliptical coccolith with *Ericsonia*-like shield image and moderately wide central area (similar to shield width), spanned by conspicuous axial crossbars.

Remarks: In XPL the shields appear similar to *Ericsonia* (i.e. with broad, bright tube cycle). Although *Ericsonia* coccoliths are rarely and sporadically seen through the Eocene, these are usually small, circular forms and we consider it most likely that this species arose from a *Coccolithus* ancestor. *Coccolithus hulliae* appears to be stratigraphically restricted to Zones NP14–15 in the Exp. 342 material. This species may have been identified as *Ericsonia insolita* Perch-Nielsen, 1971 in Bralower & Mutterlose (1995) and documented as having a first appearance in Subzone NP14a.

Differentiation: Distinguished from other *Coccolithus* and *Ericsonia* by its distinctive shield image in XPL and moderately wide central area with conspicuous axial crossbars.

Dimensions: Holotype L = 8.4µm (Paratype L = 8.6µm).

Holotype: Pl. 4, figs 16–17.

Paratype: Pl. 4, figs 13–15.

Type locality: IODP Hole U1407A, NW Atlantic Ocean.

Type level: Middle Eocene, Sample U1407B-8-CC (Subzone NP14b).

Occurrence: Subzone NP14b-15b; IODP Sites U1407, U1408 and U1409. Site U865, Pacific Ocean (Bralower & Mutterlose, 1995).

Bown, P.R. & Newsam, C., 2017. Calcareous nannofossils from the Eocene North Atlantic Ocean (IODP Expedition 342 Sites U1403–1411). *Journal of Nannoplankton Research*, **37(1)**: 25–60.