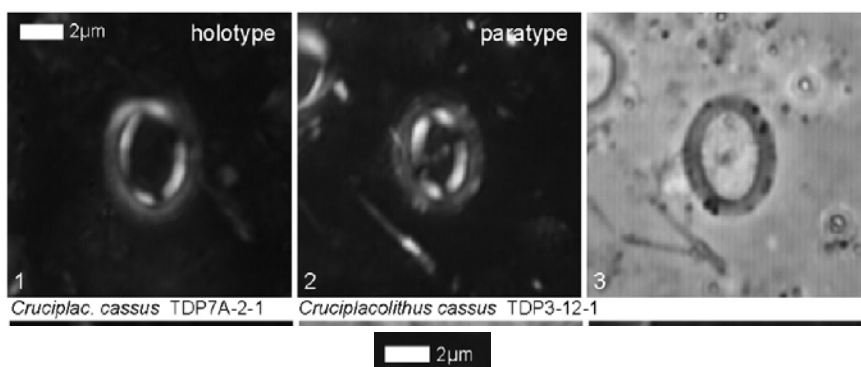


61. *Cruciplacolithus? cassus* Bown (2005)



Pl. 6, figs 1-3

Derivation of name: From *cassus*, meaning empty, and referring to the apparent lack of structures in the central-area of this coccolith.

Diagnosis: Bicyclic placolith with dark outer-cycle, slightly brighter inner-cycle and relatively wide central-area (approximately same width as shields). No central structures observed.

Dimensions: L = 6.5 μm

Holotype: Pl. 6, fig. 1.

Paratype: Pl. 6, fig. 2.

Type locality: TDP Site 7A, Kwamatola, Tanzania.

Type level: Lower Eocene, Sample TDP7A-21, 10cm (Zone NP10).

Occurrence: NP10-11; TDP Sites 3, 7A.

Bown, P.R., 2005: Palaeogene calcareous nannofossils from the Kilwa and Lindi areas of coastal Tanzania (Tanzania Drilling Project 2003-4). *Journal of Nannoplankton Research*, **27(1)**: 21-95.