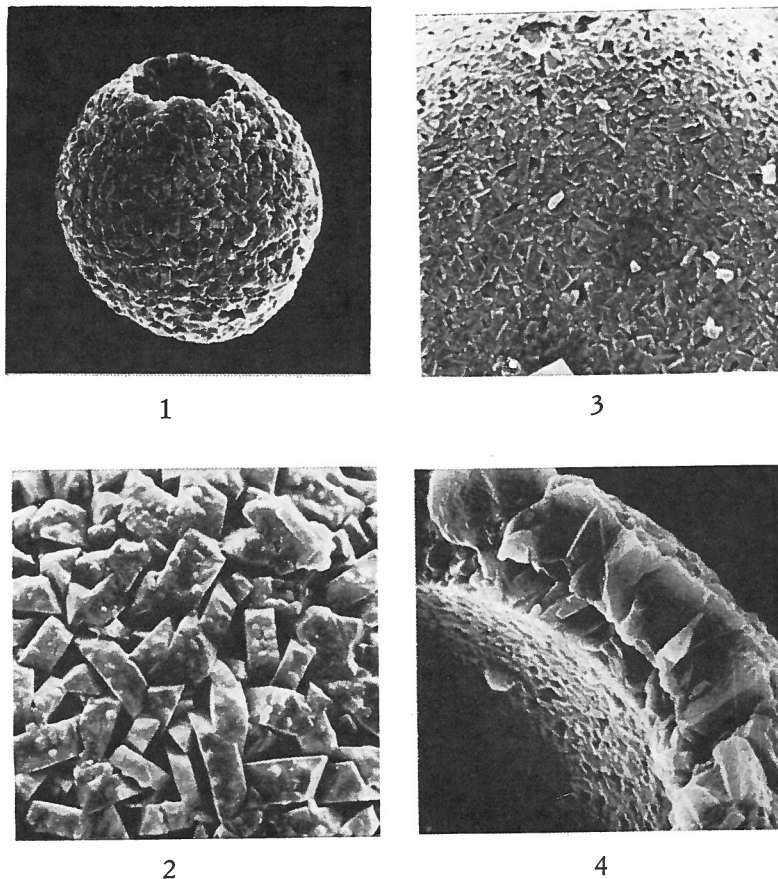


***Pithonella edgari* BOLLI, 1974**



Figs. 1-4 — *Pithonella edgari* n. sp., holotype from Sample 259-15-5, 124-126 cm; paratype from Sample 259-13-2, 60-62 cm. 1) Side view of holotype, $\times 750$, C 29870. 2) Outer surface of holotype, $\times 2500$, C 29870. 3) Inner surface of paratype, $\times 2500$, C 29871. 4) Cross-section of paratype, $\times 2500$, C 29871.

Description:

Test spherical to slightly elongate, consisting of two layers of calcite crystals, an outer one of about 5μ thickness, and an inner one of about 2μ thickness. Outer layer with distinctly angular, well-developed, fairly loosely arranged crystals with distinct interspaces. Crystals plate-shaped with large faces perpendicular to surface. Faces forming surface may be covered by small subhedral pustules (Plate 4, Figure 2).

Crystals of inner layer of apparently similar shape and arrangement as those of outer layer. They are, however, smaller and more tightly packed. Inner surface fairly smooth, compact but still with some interspaces between crystals (Plate 4, Figure 3).

Aperture circular, small to moderate in size. Rim formed by angular, fairly large crystals of outer layer and, therefore, somewhat irregular.

Dimensions of holotype: Diameter 50, aperture 14 μ .

Name: The species is named for N. Terence Edgar, DSDP chief scientist: DSDP, Scripps Institution of Oceanography, La Jolla, California.

Remarks:

Lithology of type sample: Olive-gray to greenish-gray, zeolite-rich nanno ooze.

Type level:

Middle Albian (based on calcareous nannoplankton), Albian (based on planktonic foraminifera), upper Albian (based on benthonic foraminifera).

Type locality:

Sample 27-259-15-5, 124-126 cm (holotype). See explanations Plates 4 and 13 for paratypes. Eastern side of Perth Abyssal Plain, at foot of continental slope, Indian Ocean, 29°37'S, 112°42'E. Water depth 4712 meters, depth below sea floor 139 meters.

Depository:

Museum of Natural Histori, Basle, Switzerland.

Author:

Bolli H. M., 1974, p. 854; pl. 4, figs. 1-4; pl. 13, figs. 3-7; pl. 22, fig. 4.

Reference:

39. Jurassic and Cretaceous Calcisphaerulidae from DSDP Leg 27, Eastern Indian Ocean. Initial Reports of the Deep Sea Drilling Project, vol. 27, pp. 843-907, 1 tab., 5 figs., pls. 1-24.