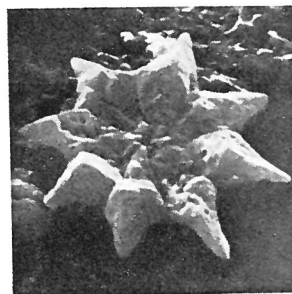


**Discoaster melitensis** HOJJATZADEH, 1978



1

Fig. 1 — *Discoaster melitensis* n. sp., distal side. Holotype G-5413-15-20. Fort Chambray (Gozo); *Discoaster kugleri* Zone.  $\times 4687.5$ .

**Description:**

Diagnosis: Eight rays with simple terminations, rays sharply directed downwards, distinctive sutures, characteristic large central area.

Description: Eight rays are separated. The central area has distinct sutures with simple terminations. On the proximal side a large slightly depressed circular central area is characteristic. Both *D. saipanensis* BRAMLETTE & RIEDEL, and *D. melitensis* n. sp. have short rays. The tips of the rays in *D. melitensis* n. sp. are directed sharply downwards. The central area is much bigger than *D. saipanensis* and no central knob is visible on the distal side.

**Type level:**

Middle Miocene.

Distribution: This well preserved species is common at the top of the Blue Clay.

**Type locality:**

Fort Chambray (Gozo).

**Depository:**

Holotype: G-5413-15-20.

**Author:**

Hojjatzadeh M., 1978, p. 9; pl. 3, fig. 1.

**Reference:**

Discoasters of the Blue Clay (Middle Miocene) of Malta and Gozo. Geological Magazine, vol. 115, no. 1, pp. 1-19, 3 pls., 7 text-figs.