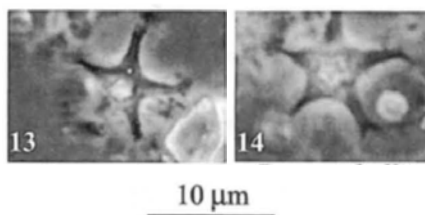


Discoaster pentabollii Wei (2003)



Pl. 1, figs 13, 14

Pl. 2, figs 13, 14 (err. cit.)

Figs 13, 14. *Discoaster pentabollii* n. sp. Sample CH30-43-2, 4.27-4.29m; 14, holotype.

Derivation of name: *Penta*, refers to the five rays of the discoaster.

Description: Five-rayed discoaster with a large, stellate stem and a relatively large central-area. The rays are bifurcated.

Remarks: This species is most similar to *Discoaster bollii* (most likely recorded as such in previous studies) but is quite distinct in having five rays, rather than six rays as in the latter species. It differs from other five-rayed discoasters by possessing a large, stellate stem, relatively large central-area, and bifurcated rays.

Occurrence: This species has been found in CN7 or NN9.

Holotype: Plate 1, Figure 14 (FSU-CH30-43-2-1-14).

Type locality: Exxon Corehole CH30-43 in the Gulf of Mexico (28°01.1'N, 86°24.7'W), Sample CH30-43-2, 4.27-4.29m.

Wei, W., 2003. Upper Miocene nannofossil biostratigraphy and taxonomy of Exxon core CH30-43-2 from the Gulf of Mexico. *Journal of Nannoplankton Research*, **25(1)**: 17-23.