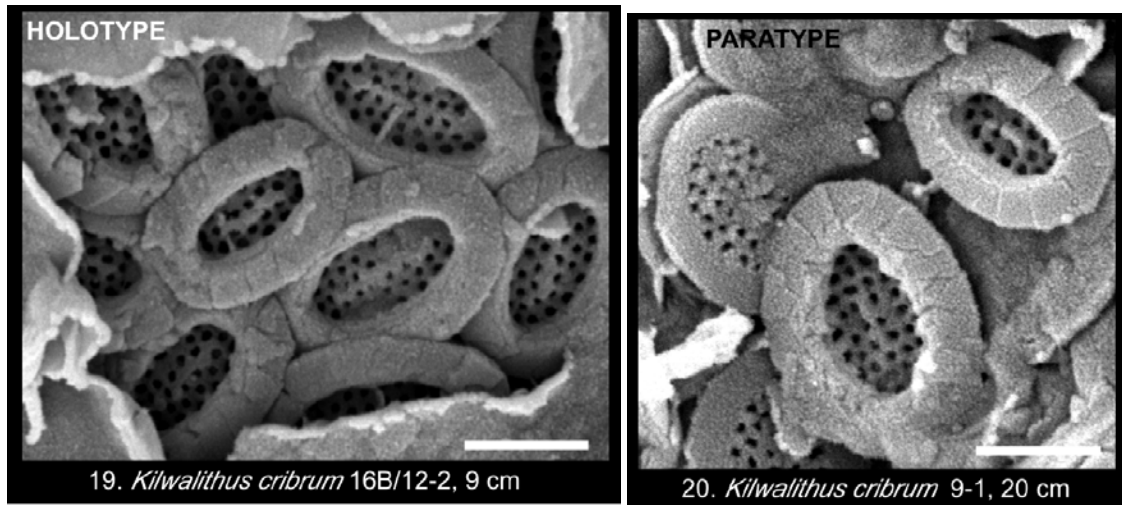


47. *Kilwalithus* Bown (2010)



Pl. 4, figs 19, 20

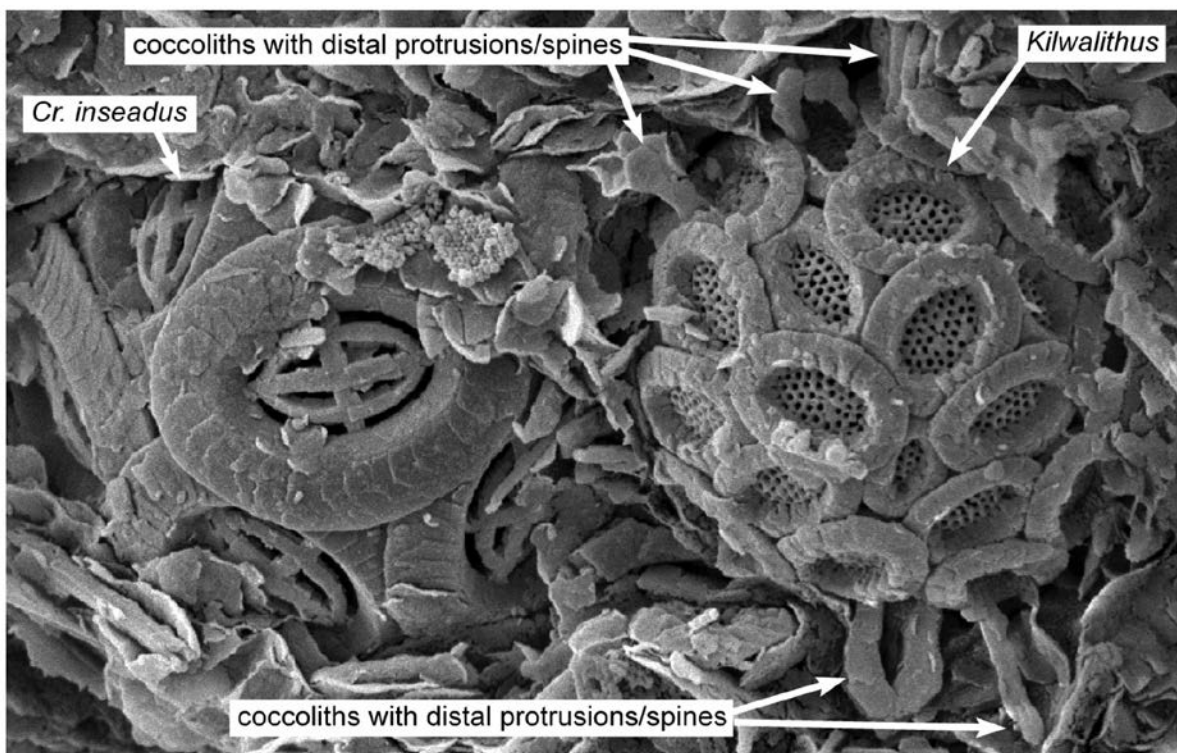


Figure 3: SEM image of a *Kilwalithus* coccosphere from TDP Site 13 (Sample TDP13/20-1, 40cm, Middle Eocene, NP15b). To the left is a coccosphere of *Cruciplacolithus inaeadus*

Fig. 3

Type species: *Kilwalithus cribrum* sp. nov.

Derivation of name: From the Kilwa area (southern Tanzania), from where these coccoliths are described.

Diagnosis: Placolith coccoliths, typically small (c. 3 μ m), with a central area spanned by a

finely-perforate net. The distal shield is typically bicyclic and the rim structure appears to be coccolithacean. The main distal shield elements are joined along kinked suture lines.

Bown, P.R., 2010. Calcareous nannofossils from the Paleocene/Eocene Thermal Maximum interval of southern Tanzania (TDP Site 14). *Journal of Nannoplankton Research*, **31(1)**: 11-38.