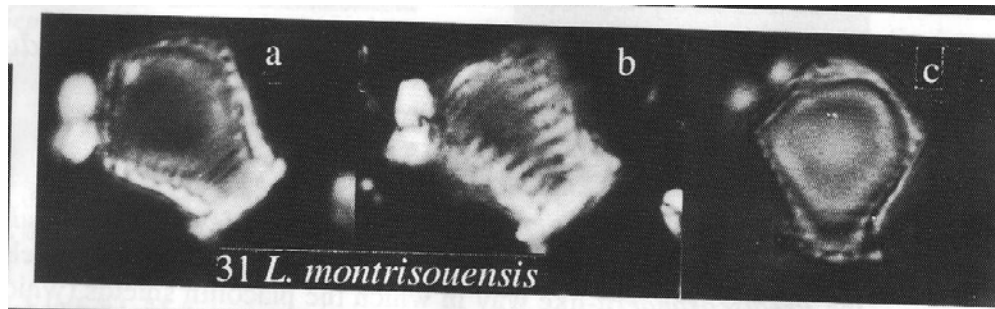


136. *Laguncula montrisouensis* Burnett (1997)



Pl. 1, figs 31a-c

**Derivation of name:** After the section at Mont Risou from which this species was first identified.

**Diagnosis:** A species of *Laguncula* with a subdiamond-shaped outline and a thin basal plate situated at the neck of the form.

**Remarks:** The new species is distinct from *L. dorotheae* in having a subangular outline and a basal plate.

**Holotype:** Plate 1, Figures 31a-c (XPL/PC); Neg.# UCL-5202-8/7/19.

**Holotype dimensions:** 10.4 $\mu$ m long, 8.7 $\mu$ m at widest point, 5.7 $\mu$ m plate width.

**Type location:** Mont Risou, near Rosans, Drôme, SE France.

**Type level:** Sample Rl-24m, Neostlingoceras carcitanense Amm. Subzone, Mantelliceras mantelli Amm. Zone, Upper Albian Marnes Bleues Formation, CC9b.

**Range:** Upper Albian.

Burnett, J.A., 1997. New species and new combinations of Cretaceous nannofossils, and a note on the origin of *Petrarhabdus* (Deflandre) Wind & Wise. *Journal of Nannoplankton Research*, **19(2)**: 133-146.