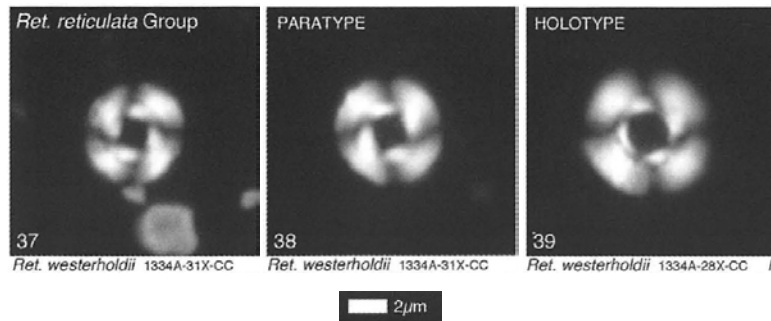


76. *Reticulofenestra westerholdii* Bown & Dunkley Jones (2012)



Pl. 1, figs 37-39

**Derivation of name:** Named after Thomas Westerhold (University of Bremen, Germany), Exp. 320 shipboard scientist, stratigrapher and palaeoceanographer.

**Diagnosis:** Medium sized (5-8 $\mu$ m), circular reticulofenestrid with open central area (similar in width to, or slightly narrower than, the rim width) but no perceptible net. Subcircular to broadly elliptical forms are rarely observed and distinguished as *R. cf. R. westerholdii* (Pl. 1, figs 40-43).

**Differentiation:** Distinguished from *R. reticulata* by the smaller size, narrower tube, proportionally wider central area and absence of visible net. Distinguished from *C. floridanus* by the circular outline, wider central area and low tube cycle.

**Dimensions:** Holotype L = 6.9  $\mu$ m (Paratype L = 5.9  $\mu$ m).

**Holotype:** Pl. 1, fig. 39.

**Paratype:** Pl. 1, figs 38.

**Type locality:** IODP Hole U1334A, Pacific Ocean.

**Type level:** Upper Eocene, Sample U1334A-28H-CC (Zone NP19/20).

**Occurrence:** Can be common to abundant. Zone NP16-Zone NP19/20; IODP Sites U1331-1334.

Bown, P.R. & Dunkley Jones, T., 2012. Calcareous nannofossils from the Paleogene equatorial Pacific (IODP Expedition 320 Sites U1331-1334). *Journal of Nannoplankton Research*, **32(2)**: 3-51.