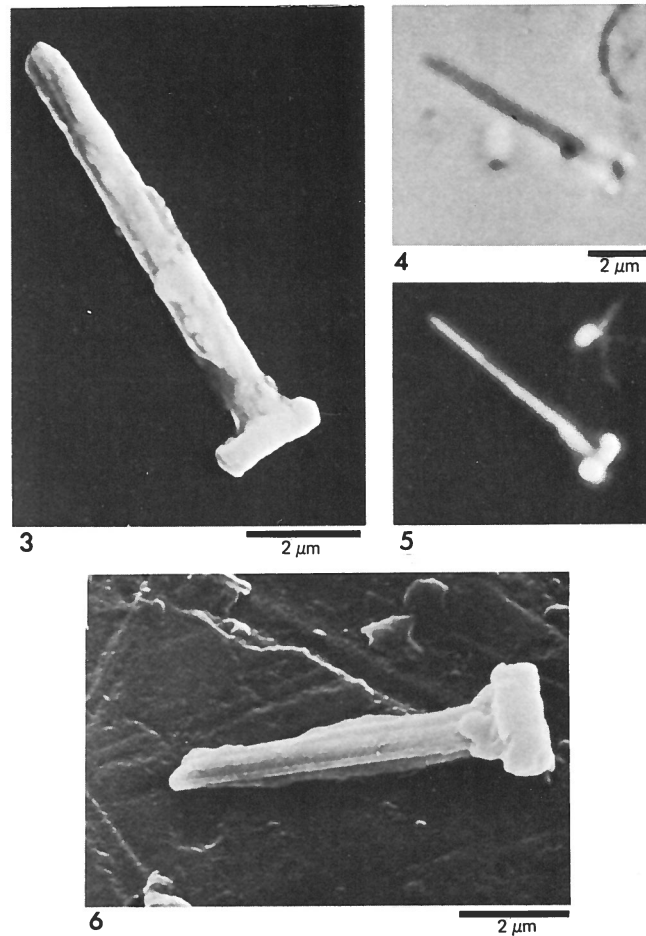


*Rhabdolekiskus
parallelus*

Rhabdolekiskus parallelus WIND & ČEPEK, 1979

1972 *Eurhabdus luciformis* REINHARDT, 1965 - Wilcoxon, pl. 10, fig. 4, Init. Repts. DSDP, vol. 11.



Figs. 3-6 - *Rhabdolekiskus parallelus* n. sp.

3) Scanning electron micrograph; holotype USNM 256043; Sample 397A-47, CC. 4, 5) Isotype USNM 256044. Sample 397A-46-3, 58-59 cm. (4) Phase contrast. (5) Cross-polarized light. 6) Scanning electron micrograph; isotype USNM 256045; Sample 397A-39, CC.

Description:

Long, straight-sided stem constructed of four elongate elements arising from a small tabular base. Width of stem is about half of the width of the base.

Dimensions: Total length to 9.8 μm : Holotype 8.5 μm . Width of base 2.0 to 2.4 μm : Holotype 2.0 μm . Width of stem 0.85 to 1.0 μm : Holotype 0.92 μm .

Remarks:

The mode of construction of the base and stem of this species is best illustrated in Plate 3, Figure 6, and in Wilcoxon (1972a, pl. 10, fig. 4), consisting of a thin single cycle of flat-lying elements supporting a taller set of inclined tablets. The constant width of the stem of this species distinguishes it from *Rhabdolekiskus aquitanius* (MANIVIT, 1971) HILL, 1976, which tapers both towards its terminus and towards the point of attachment of base and stem. The specimen illustrated in Wilcoxon (1972a) is approximately the same size as the specimens illustrated in Plate 3. *Eurhabdus luciformis* REINHARDT is a much larger form which was placed in synonymy with *Lucianorhabdus cayeuxii* DEFLANDRE in Wind (1975).

Type level:

Hauterivian.

Occurrence: This species is present in several well-preserved Hauterivian samples from Hole 397A, and is also present in the Barremian of Hole 105 (western North Atlantic).

Type locality:

Eastern Atlantic Ocean, Sample 397A-47, CC (1405 m).

Depository:

Holotype: USNM 256043 (Plate 3, Figure 3).

Isotypes: USNM 256044, 256045.

Author:

Wind F.H. & Čepek P., 1979, p. 232; pl. 3, figs. 3-6.

Reference:

Lower Cretaceous calcareous nannoplankton from DSDP Hole 397A (Northwest African Margin). Init. Repts. DSDP, vol. 47, pp. 221-255, 11 pls., 3 text-figs.