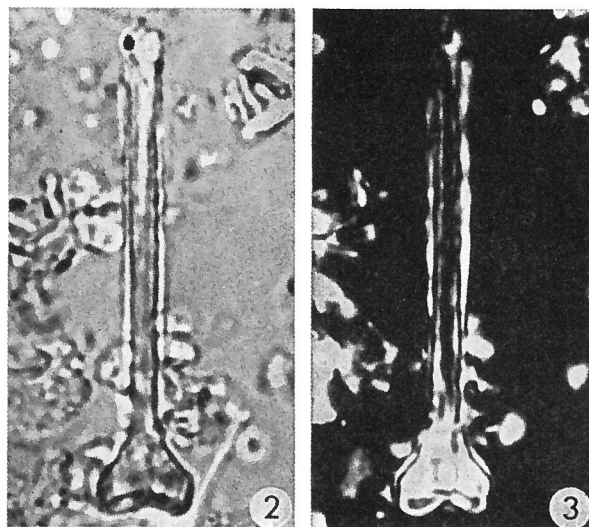


Scyphosphaera martinii JAFAR, 1975



Figs. 2, 3 — *Scyphosphaera martinii* n. sp. Light micrographs, x 2000. 2) Holotype SM.B 125 93; 3) x-nicols, long axis 45° to polarize .

Description:

Diagnosis: *S. martinii* n. sp. is characterized by the presence of an exceptionally long, narrow tube of uniform thickness and a reduced basal part.

Description: This is a comparatively large species of *Scyphosphaera* having a greatly reduced basal region. In possessing a distinct “edge” in the basal part, it shows affinity with the lopa-doliths of the *S. intermedia* group. From a small, arched basal plate the walls diverge outward-upward and then bend sharply inward, forming a characteristic “edge”. Just above the “edge” the walls rise up in straight-parallel fashion, forming a long and narrow tube of uniform thickness. At the apical end the walls terminate simply. The apical opening is much smaller than the base.

Dimensions of the holotype: Height: 33 μ ; width of the base: 5 μ ; height of the “edge” from the base: 2.5 μ ; length of the tubular part: 27 μ ; width of the tube including the thickness of the walls: 3 μ .

Remarks:

S. martinii n. sp. shows close affinity with *Scyphosphaera tubifera* KAMPTNER, but can be readily distinguished from it by the presence of a narrower and much longer tubular part. From *S. elegans* (OSTENFELD) DEFLANDRE, it differs in lacking any outward bend of walls at the distal end.

Type level:

Upper Middle Miocene.

Occurrence: *Scyphosphaera martinii* n. sp. occurs rarely in sample number 168, this sample is assigned by the present author to the Upper Middle Miocene, corresponding to the upper part of the standard nannoplankton Zone NN 9 (Martini and Worsley, 1970).

Type locality:

Sample n° 168 from Bebalain, Rotti, Series VIII of the first Netherlands' Timor expedition (Indonesia).

Depository:

Mineralogisch-Geologisch Museum of the Technische Hogeschool, Delft, The Netherlands. Catalogue N° KA 16243. Holotype: SM.B 125 93 18.5 N/ 2.9 E from the blue point.

Author:

Jafar S.A., 1975, p. 41; pl. 1, figs. 2, 3.

Reference:

Calcareous Nannoplankton from the Miocene of Rotti, Indonesia. Verh. der Konin. Neder. Akad. van Wetensch., afd. Natuurk., Eerste Reeks, Deel 28, pp. 1-100, 15 pls., 2 figs., 1 tab.