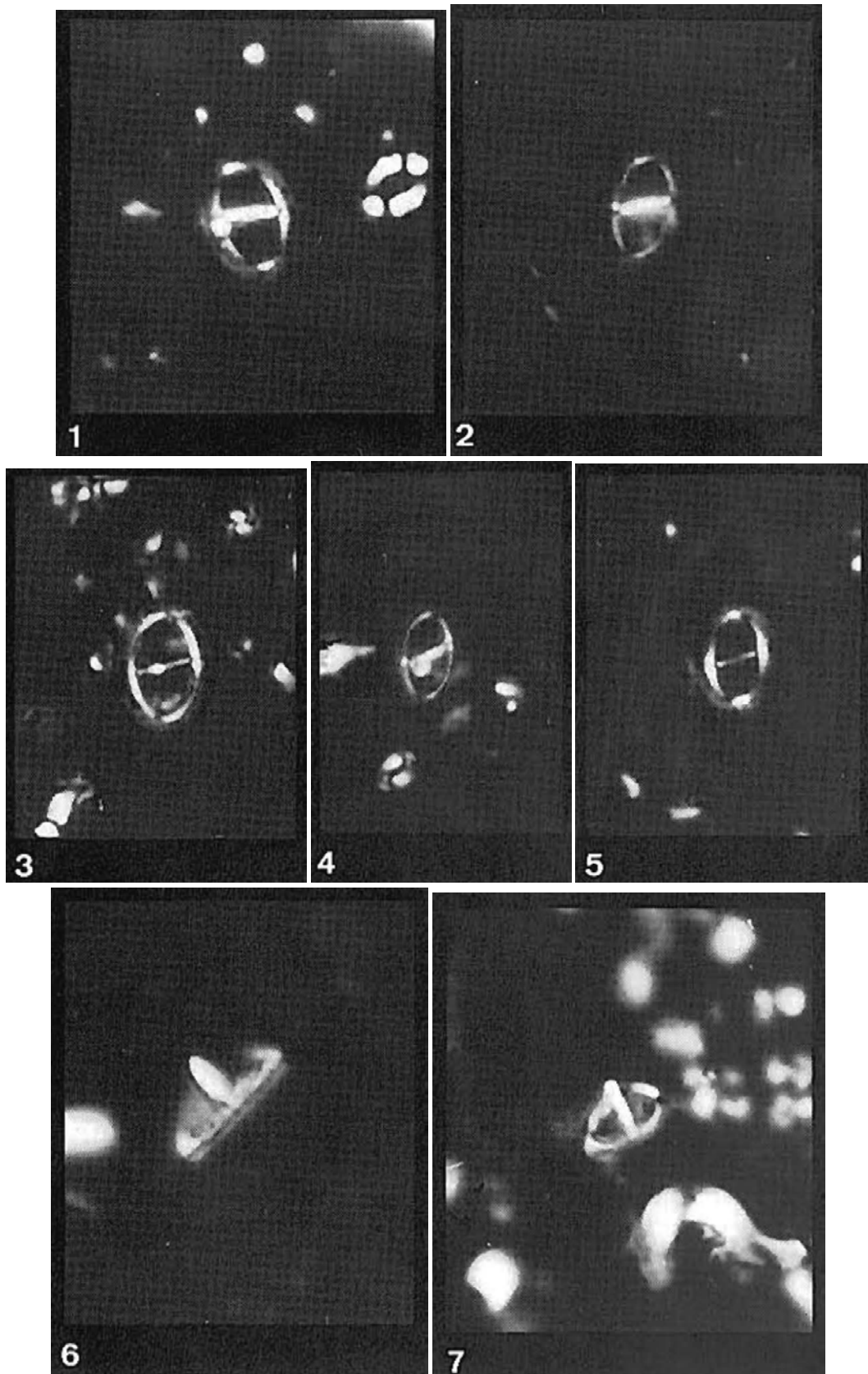


214. *Solidopons petrae* Theodoridis (1984)



Pl. 6, figs 1-7

Etymology: In honour of Miss Petra van der Schaar for her moral support and her valuable technical assistance during the completion of this publication.

Description: Elliptical placoliths with a large central opening. The bridge is (sub) parallel to the shorter axis of the placolith and it is highly arched in distal direction. The distal shield is non birefringent in contrast to the proximal shield and the bridge which are bright between crossed nicols.

Occurrence: This species occurs sporadically from the *H. ampliapertura* Zone to the *E. exilis* Zone.

Holotype: Pl. 6, fig. 1, sample: 219-39, coordinates; 104.1/6.2.

Isotypes: Fig. 2, sample: CP4566; fig. 3. sample: 369A-17 ; fig. 4, sample: 369A-57; fig. 5, sample: 219-39; fig. 6, sample: 369A-59; fig. 7, sample: 369A-12. All figures in plate 6.

Type level: *H. obliqua* Subzone.

Type locality: D.S.D.P. Site 219, Laccadive-Chagos Ridge, Indian Ocean.

Theodoridis, S., 1984. Calcareous nannofossil biozonation of the Miocene and revision of the helicoliths and discoasters. *Utrecht Micropaleontological Bulletins*, **32**: 271pp.