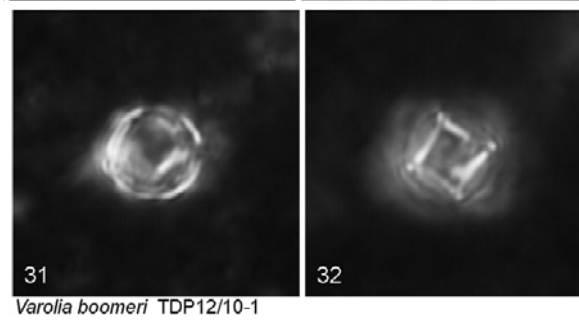
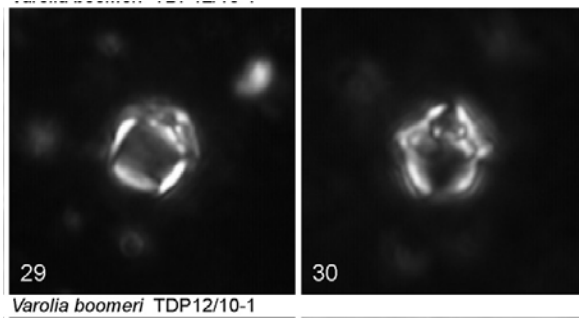
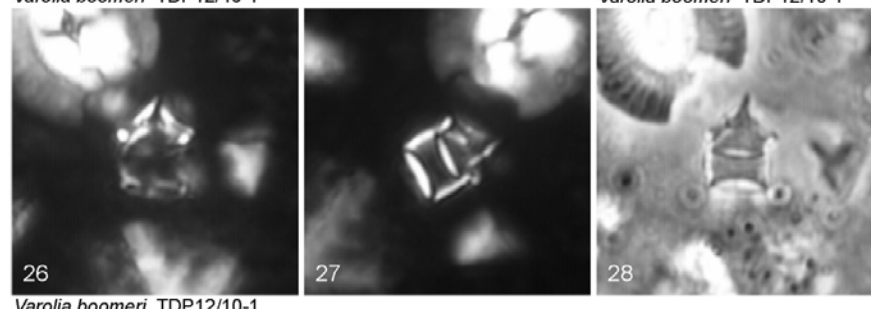
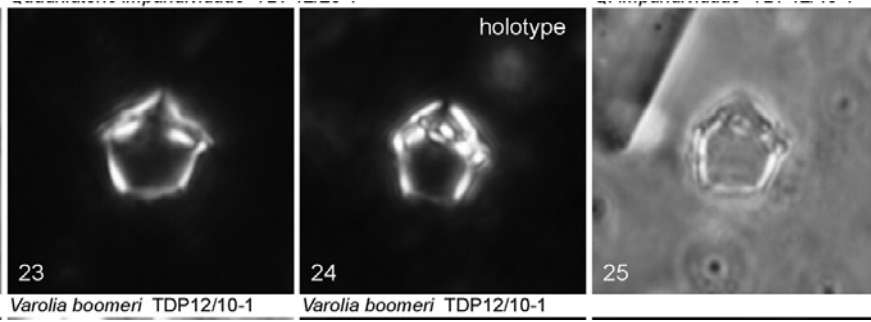
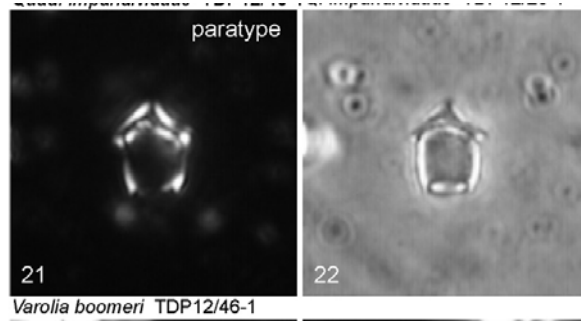


237. *Varolia boomeri* Bown & Dunkley Jones (2006)



2µm

Pl. 4, figs 21-32

Derivation of name: After Dr. Ian Boomer (Universities of Newcastle and Birmingham, UK), micropalaeontologist.

Diagnosis: A multi-element, cavate, box-like coccolith with a pointed apical structure. The walls of the box and apical structure comprise narrow, birefringent, crystallographically-distinct elements that are birefringent in XPL.

Differentiation: More complexly constructed than other species of *Varolia*.

Dimensions: H = 4.4-5.5 μ m; W = 3.5-5.6 μ m.

Holotype: Pl. 4, fig. 24 (fig. 25 same specimen).

Paratype: Pl. 4, fig. 21 (fig. 22 same specimen).

Type locality: TDP Site 12, Pande, Tanzania.

Type level: Lower Oligocene, Sample TDP12/10-1, 55cm (Zone NP21).

Occurrence: NP19/20-21; TDP Site 12.

Bown, P.R. & Dunkley Jones, T. 2006: New Palaeogene calcareous nannofossil taxa from coastal Tanzania: Tanzania Drilling Project Sites 11 to 14. *Journal of Nannoplankton Research*, **28(1)**: 17-34.