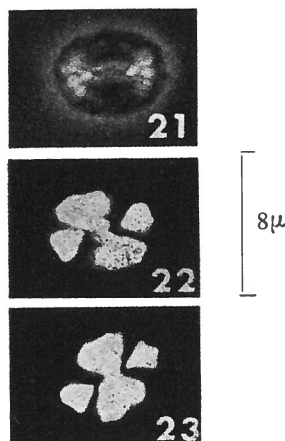


Watznaueria bayacki WORSLEY, 1971



Figs. 21-23 — *Watznaueria bayacki*, n. sp., proximal view; 21) micrographed in phase contrast illumination; 22) micrographed in cross polarized light with long dimension of specimen parallel to one vibration direction; 23) micrographed in cross polarized light with long dimension of specimen 45° to the vibration directions; (21-23) Holotype UI-H-4321.

Description:

W. bayacki is a highly elliptical small species of *Watznaueria* composed of about 20 radial elements and possessing a serrate margin. The central area occupies about 1/4 the short and 1/2 the long axis of the coccolith and has two prominent pores aligned with the long axis and connected by a straight groove. The proximal shield is about 90% the diameter of the distal shield.

Type level:

Hauterivian.

Occurrence: Portlandian-Hauterivian.

Type locality:

Caribbean Sea. JOIDES, DSDP, Leg 1, holes 4 and 5A, samples A-E.

Depository:

Department of Geology, University of Illinois, Urbana, Illinois. Holotype: UI-H-4321.

Author:

Worsley T.R., 1971, p. 1314; pl. 1, figs. 21-23.

Reference:

Calcareous nannofossil zonation of Upper Jurassic and Lower Cretaceous sediments from the Western Atlantic. Proc. II Plank. Conf. Roma 1970, pp. 1301-1321, pls. 1, 2, 1 text-fig., 1 tab., Tecnoscienza.