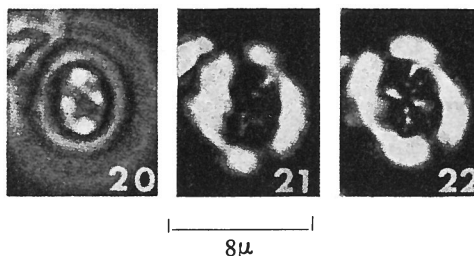


**Watznaueria quadrata** WORSLEY, 1971



Figs. 20-22 — *Watznaueria quadrata*, n. sp., proximal view; 20) micrographed in phase contrast illumination; 21) micrographed in cross polarized light with long dimension of specimen parallel to one vibration direction; 22) micrographed in cross polarized light with long dimension of specimen 45° to the vibration directions; (20-22) Holotype: UI-H-4343.

**Description:**

This species is characterized by an X-shaped structure spanning the open central area. The angle between the crossbars is 60° and 120° parallel to the long and short axes of the placolith respectively. The bars of the x-shaped central structure flare toward the rim leaving four circular openings between. The rims each have about 30 elements which imbricate dextrally in proximal view and the distal rim is about 2/3 the diameter of the proximal rim.

**Remarks:**

*W. quadrata* is distinguished from other species of *Watznaueria* REINHARDT and *Helenea* n. gen. by the X-shaped structure in its central area. It is probably a descendent of *W. britannica* (STRADNER).

**Type level:**

Hauterivian.

Occurrence: Kimmeridgian-Hauterivian.

**Type locality:**

Caribbean Sea. JOIDES, DSDP, Leg 1, holes 4 and 5A, samples A, B and E.

**Depository:**

Department of Geology, University of Illinois, Urbana, Illinois. Holotype: UI-H-4343.

**Author:**

Worsley T.R., 1971, p. 1315; pl. 2, figs. 20-22.

**Reference:**

Calcareous nannofossil zonation of Upper Jurassic and Lower Cretaceous sediments from the Western Atlantic. Proc. II Plank. Conf. Roma 1970, pp. 1301-1321, pls. 1, 2, 1 text-fig., 1 tab., Tecnoscienza.