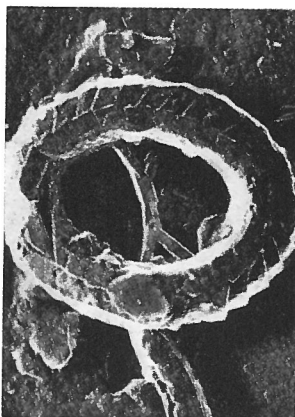


Watznaueria reinhardti ROOD, HAY & BARNARD, 1971

1965 *Ellipsagelosphaera lucasi* NOEL (pars), pl. 11, fig. 4, p. 126-129.



6

Fig. 6 — *Watznaueria reinhardti* n. sp. Distal side. Holotype: 33.4.1. Millbrook (Bedfordshire); *cordatum* zone – *bukowskii* subzone (4945). Electron micrograph of platinum-shadowed carbon replica. x 8100.

Description:

Diagnosis: A species of *Watznaueria* with a very large central opening spanned by a bridge in the minor axis.

Description: The rim is unusually narrow, and the central opening very large. The bar in the minor axis bifurcates as it joins the rim.

Size: Length 4.7 μm , width 4.1 μm .

Remarks:

The relative proportions of the width of the rim and large central opening distinguish this species from *W. britannica* (STRADNER).

Type level:

Oxfordian, *cordatum* zone – *bukowskii* subzone (4945).

Type locality:

Millbrook (Bedfordshire), England.

Depository:

Micropaleontology Department, University College, London. Holotype: 33.4.1; paratype: 28.10.1.

Author:

Rood A.P., Hay W.W. and Barnard T., 1971, p. 269; pl. 5, fig. 6.

Reference:

Electron microscope studies of Oxford Clay Coccoliths. *Eclogae geol. Helv.*, vol. 64, n° 2, pp. 245-272, pls. 1-5, 3 text-figs.