

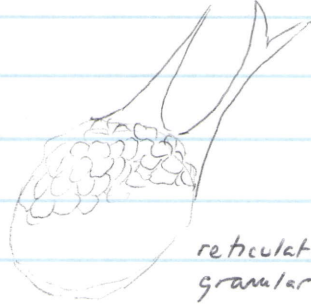
CHELEUTOCHROA

Loeblich & Tappan emend Turner & 4

Rel. thick vesicle reticulate, reticulation breaks up into elongate ridges that are sub-parallel or converge towards the processes but do not extend onto them. Processes laevigate, simple or branching conical hollow, distally solid, communicating freely with vesicle interior.

C. diaphorosa

Turner & 4 p. 105, pl. 1, fig 5, pl. 7, fig 3

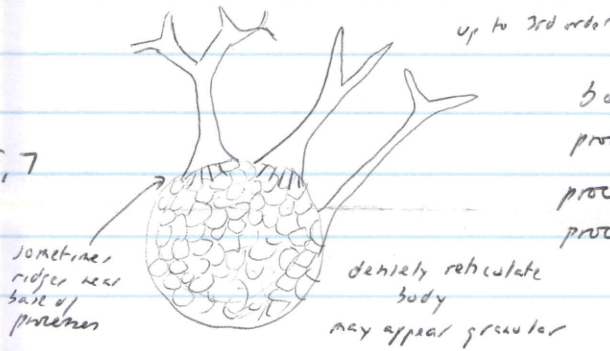


reticulate body (SEM)
granular (transmitted)

body 16-20
process length 14-21
process number 12
smooth processes simple - furcate
on each specimen

C. homota

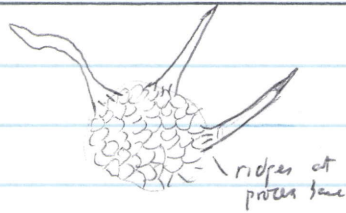
Turner & 4 p. 106, pl. 7, fig 5, 7



body 16-20
process length 16-19
process number 10-20
processes all furcate

C. meionia

Turner & 4 p. 107, pl. 1, fig 4
pl. 7, fig 2



body 12-19
process length 8-21
process number 10-15
processes simple, somewhat flexuous
type only gradually to acuminate
normally solid tip

C. gymnostrachata

Tappan Loeblich & Tappan 78

similar to C. meionia
but twice as large

