

CYMATIOSPHAERA delicata

Cookson - Eisenack 1971

Cookson - Eisenack 1971, p 221, pl. 10, fig. 13 (holotype), 12, 14

- Cooper - Everack 1971: Albian - Cenomanian, W. Australia
(cf) Wheeler & Sargeant 1990: Callovian - Oxfordian Iran
Riley & Fenton 1964: Hauterivian - Aptian Gulf of Mexico
Fechner 1992b (pl. 3, fig. 11): Barremian NW Germany
Prince, Jarvis & Tocher 1999: Santonian / Early Campanian
Isle of Wight England
Prince, Jarvis, Pearce & Tocher 2008:
Middle Coniacian Kent SE England
Middle-Late Coniacian Isle of Wight England
Sitmez & Ertug 1999 (pl. 4, fig. 6) Kimmeridgian
northwest Anatolia Turkey
(aff.) Troncoso 1977 thesis (p. 57, pl. 5, fig. 5): Paleocene
Magellan region southern Chile

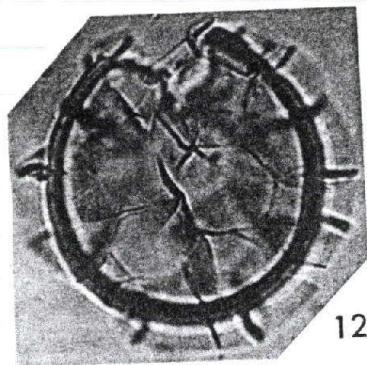
Cymatiosphaera delicata n. sp.

(Pl. 10, fig. 12-14, Holotype fig. 13 F8097)

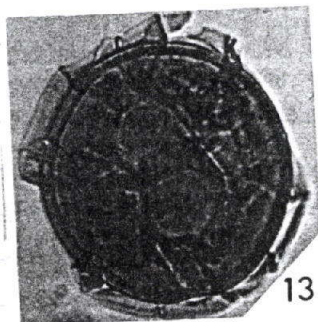
AGE AND OCCURRENCE: Mid-Cretaceous, Eyre Bore No. 1 core 20, Western Australia.

DIMENSIONS: Holotype (Pl. 4, fig. 13): Shell diameter c. $60\ \mu$, overall diameter c. $67\ \mu$, wall c. $3\ \mu$. Range: Diameter of shell c. $52-78\ \mu$, overall diameter c. $60-94\ \mu$, wall c. $2-3\ \mu$, ledges c. $4-7\ \mu$. Six specimens measured.

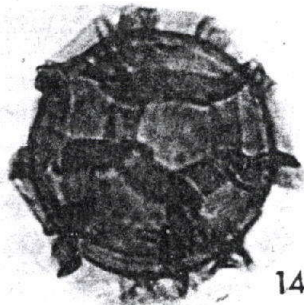
DESCRIPTION: Shell relatively large with a thickish wall and delicate high ledges which form rather large 5- or 6-sided polygons the number of which on one half-sphere is about six or seven. No pylome has been observed.



12



13



14

