

T

OCALASPHERA *blindii*

Prössl 1992

Prössl 1992 p. 226 pl. 2, fig. 12 (holotype) 13, 14, text-fig 4

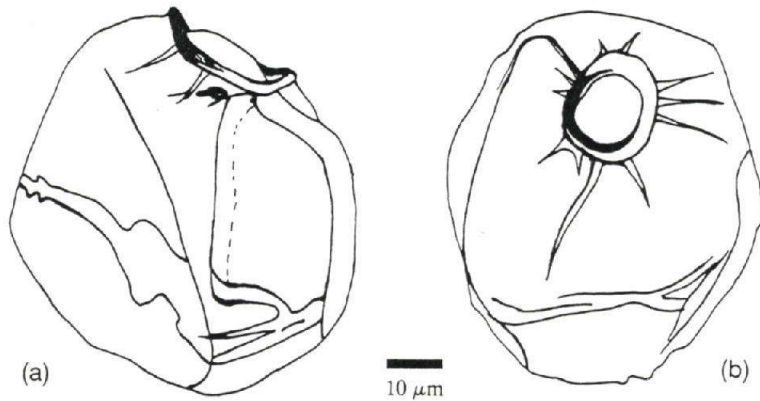


Fig.4. *Ocalasphaera blindii* gen. et sp. nov. Drawings based on photomicrographs. (a) Test showing the folded surface with a marginal pylome. (b) Test showing the radial folds around the pylome.

*Ocalasphaera blindii* sp. nov. Plate II, 12-14, Fig.4.

*Derivato nominis:* After Prof. Dr. W. Blind, palaeontologist at the Justus-Liebig-University of Gießen.

*Holotypus:* Slide No. 11-10-02-90-16, Plate II, 12.

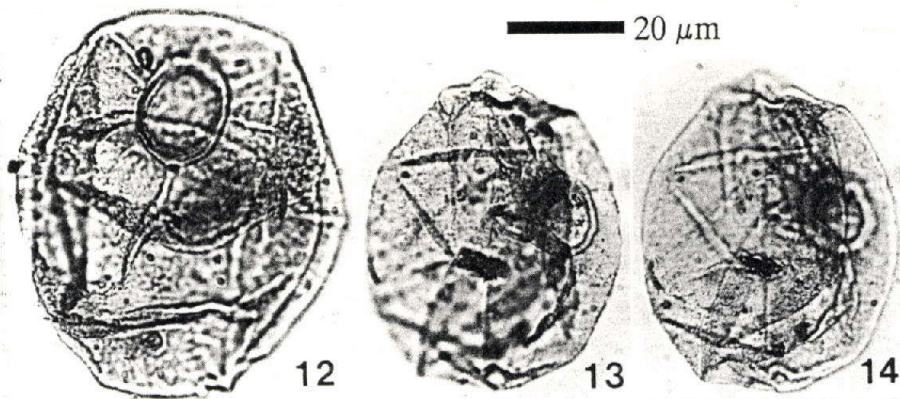
*Paratypus:* Slide No. 11-10-02-90-9, Plate II, 13, 14.

*Locus typicus and stratum typicum:* Quebrada Ocal, 20 km south-southwest of Neiva, Magdalena Superior, Colombia, Fm. Villeta, sample No.11-10-02-90, probable Middle Albian.

*Diagnosis:* As for the genus.

*Description:* This lenticular acritarch species is always irregularly compressed. Therefore the outline ranges from subcircular to oval. The smooth to scabrate wall is folded and shows a subcircular pylome, surrounded by a narrow zone of thicker wall. The primary position of the pylome may be

apical but after compression it is found to be equatorial, marginal or elsewhere on the test. Sometimes the pylome is surrounded by radial folds as shown by the holotype. A plug-like operculum is not always present.



*Dimensions:*

diameter: 50 (60) 68 µm (holotype 66 µm)

diameter of the pylome: 14 (17) 21 µm (holotype 19 µm)

thickening around the pylome: 1,5 (2) 2,5 µm (holotype 2 µm)

Ten specimens measured.

*Stratigraphic range:* Probable Middle Albian.

*Remarks:* The holotype and the paratype nearly represent the two end members of this species.

Prossl 1992 (p. 266, pl. 2, figs 12-14) probable Middle Albian Colombia