

PORUSPHAERA erenensis

Lang Yan, He Cheng-guan, Wu Chun-guang & Yang Guo-qi 1999
p. 384 pl. 5, figs 6-12 (holotype fig. 7)

[English translation p. 389]

Lang et al. 1999: Barremian/Aptian, Eren Basin, Nei Mongol, North China

Porusphaera erenensis sp. nov.

(Pl. V, figs. 6-12)

Derivation of name This species has been named after its occurrence in the Eren Basin, Nei Mongol.

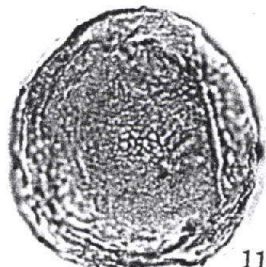
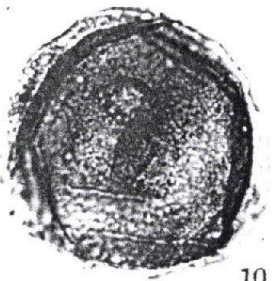
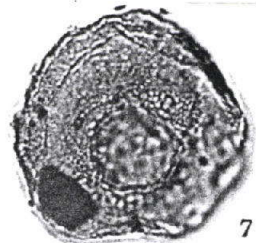
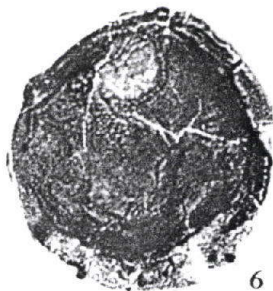
Diagnosis Shell intermediate, often compressed "apical-antapically", outline circular in polar view, or subcircular to rounded triangular in equatorial view. Autophragm thin, surface finely granular to retirugose with secondary folds, usually conspicuous retirugose wall around excyst opening, whereas the remains granular, shell ambitus almost smooth. Pylome larger, its outline regularly circular with more or less thickened margins, usually situated in shell centre or interior, but on rare specimens in shell "apex", operculum free. In some specimens lacking pylome where there is a large-meshed reticulate wall, possibly precluding excystment.

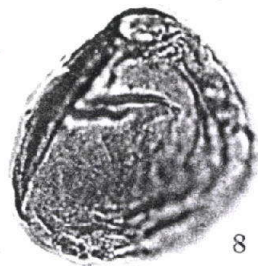
Holotype Plate V, fig. 7, Hadat Formation (Early Cretaceous); slide T6-1(1).

Dimensions Shell diameter 45.1-57.2 μm , pylome diameter 8.6-20 μm (15 specimens measured). Holotype, shell diameter 45.1 μm , pylome diameter 15.6 μm .

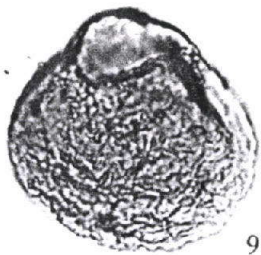
Comparison This new species differs from *Porusphaera bellatula* Jiabo, 1978 in having smaller, regular, circular pylome and in being granular to retirugose surface; from *P. foveolata* Yu et al., 1981 in having larger shell.

Occurrence Hardat Formation (Early Cretaceous), Dong Ujimqin Qi (county), Nei Mongol.

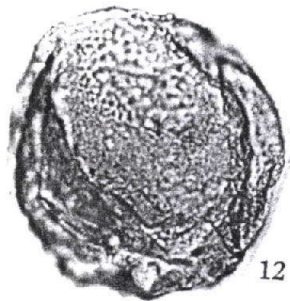




8



9



12