

T

*WUROIA capnosa*

Stover &amp; Helby 1977a

Stover &amp; Helby 1977a, pp 129-130, Fig 28A-D (holotype 28B-C)

*WUROIA CAPNOSA* sp. nov. (Fig.28)

**Description.** Organic walled microfossils, of unknown affinity, with an elongate, narrowly ellipsoidal to crescent-shaped body composed of a single wall layer. One end of body narrowly rounded, occasionally somewhat pointed and closed; other end truncate and open. Margin of the opening irregular, ragged to indistinctly angular. Body wall thin (less than  $1\mu\text{m}$ ), smooth, faintly wrinkled, often with scattered, minute granules less than  $1\mu\text{m}$  in diameter and height. Two or more, prominent, longitudinal folds consistently present and transverse folds also present. One or more longitudinal folds commonly extend the entire length of body or over a significant part of its length. Specimens 160-222 $\mu\text{m}$  long, 45-72 $\mu\text{m}$  wide; 10 specimens measured.

**Material.** Holotype (Fig. 28B,C) from the 'lower shale unit' in the Papuan Basin (Burns & Bein, 1980), *Wanaea digitata* Zone, Callovian. For further details of types see Appendix 1.

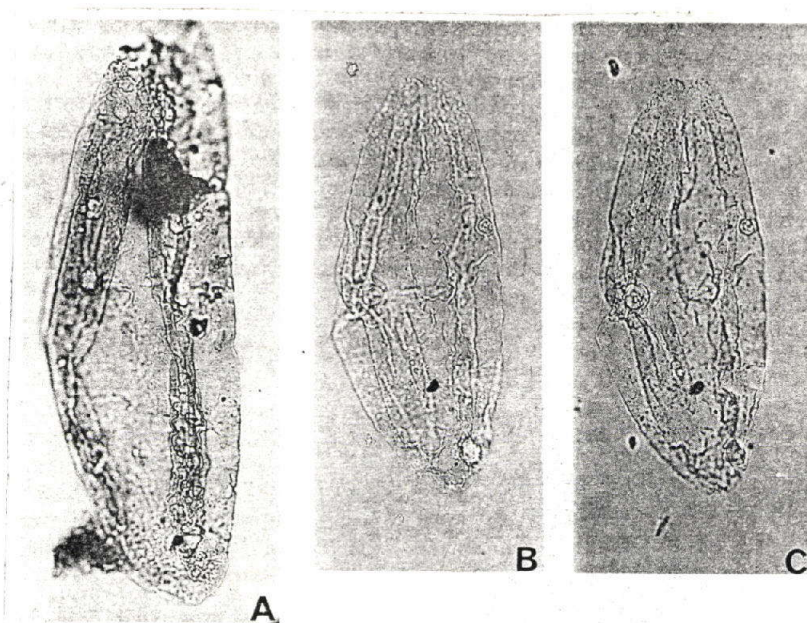


Fig.28. *Wuroia capnosa* sp. nov. B,C holotype. A,D paratypes. All  $\times 400$ .

Stover & Helby, 1987a: Callourian, Papua

Helby, Morgan and Partridge 1987 (Fig 17E, F): middle/late Callourian, Australia

