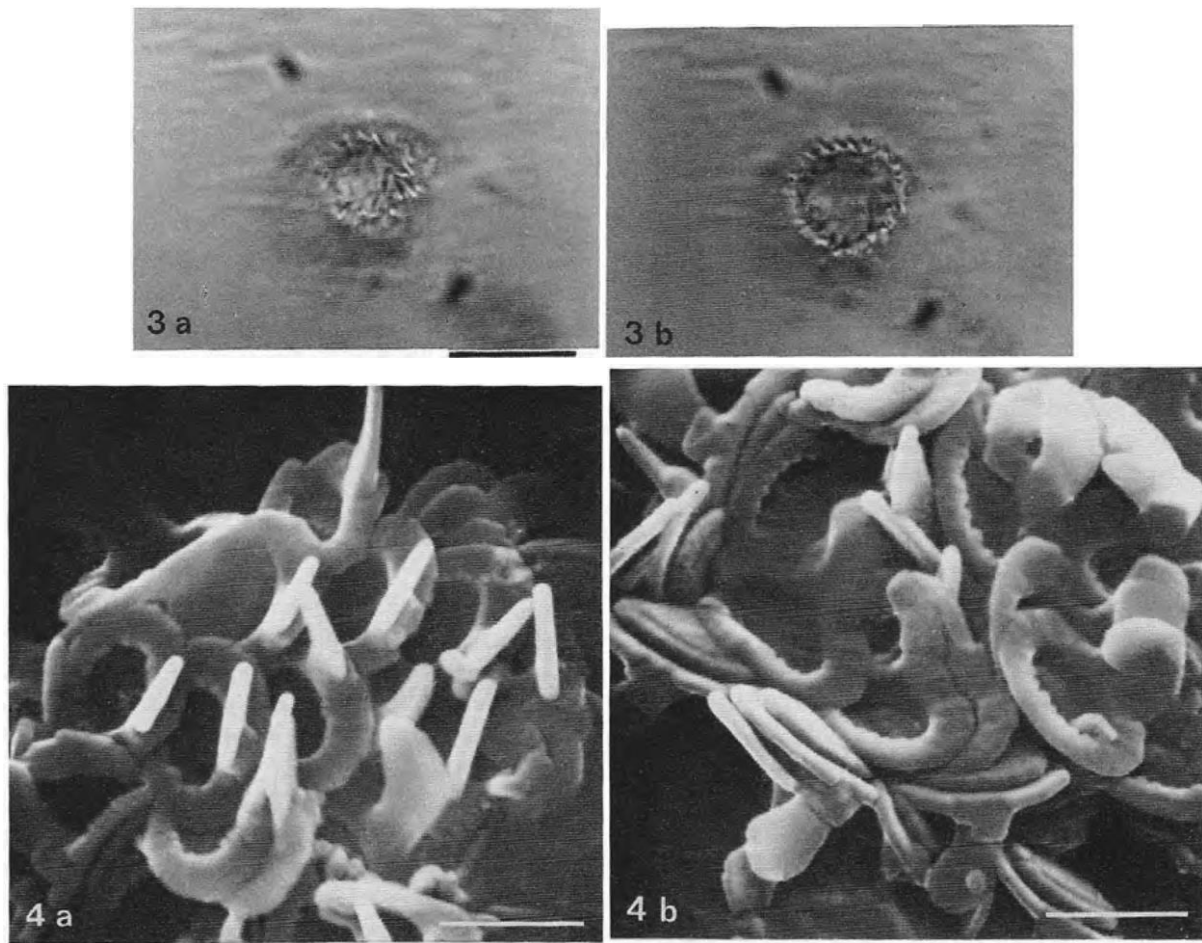


*Alisphaera capulata* Heimdal in Heimdal & Gaarder (1981)



Pl. 1, Figs 3, 4

Plate 1. Figs 3, 4. *Alisphaera capulata*. Fig. 3a, b. Two focusings of the same cell, LM. Fig. 4a, b. Holotype, SEM. Scale bar, LM = 10  $\mu\text{m}$ , SEM & TEM = 1  $\mu\text{m}$

**Derivation of specific name:** *L. capulus*, handle; with reference to the conspicuous raised part of the distal rim of the coccoliths.

**Number of specimens studied:** 5.

**Diagnosis:** Coccolith case subspherical, diameter about 10  $\mu\text{m}$ . Coccoliths about 0.3  $\mu\text{m}$  high excluding raised part, maximum height of raised part of distal rim 0.8  $\mu\text{m}$ , flattened part slightly convex, approximately 0.3  $\mu\text{m}$  wide. Number of elements in flattened part about 20. Proximal disc about 1.3  $\mu\text{m}$  long and 0.6  $\mu\text{m}$  wide. Slender raised part more or less inclined to the left at top as seen from centre of the coccolith. In distal view, no mark of distinction between tube and raised part can be observed from inside. Outside, the latter has a distinct narrow ledge near basis.

**Holotype:** Negatives EMB, c 4860–c 4864.

**Type locality:** Off La Spezia, Ligurian Sea.

Testa coccolithica subsphaerica, circiter 10  $\mu$ .m diam. Coccolithus praeter partem elatam circiter 0.3  $\mu$ .m altus; pars elata orbis superioris ad 0.8  $\mu$ .m alta, pars complanata paululum convexa, circiter 0.3  $\mu$ m lata, ex circiter 20 elementis composita. Discus inferior circiter 1.3  $\mu$ .m longus, 0.6  $\mu$ m latus. Pars elata orbis superioris angusta, apice e centro coccolithi viso plus minus ad sinistram inclinato, facie centrum prospiciente nullo limite a facie interiore tubi distincta, facie aversa prope basem gradum angustum manifestum exhibente.

**Holotypus:** Imagines negativae EMB, c 4860–c 4864.

**Habitatio typi:** Mare Ligusticum.

**Remarks:** Both parts of the distal rim are of about the same width in the type *A. ordinata* HEIMDAL (HEIMDAL 1973), while in *A. capulata*, a smaller part of the distal rim is raised and arches higher above the coccolith. In *A. unicornis* OKADA & McINTYRE the beak-shaped projection on the distal rim seems to be a continuation of the central element of the raised part (OKADA & McINTYRE 1977), while in *A. capulata* the complete raised part appears as a handle-shaped projection.

Heimdal, B.R. & Gaarder, K.R., 1981. Coccolithophorids from the northern part of the eastern central Atlantic. II. Heterococcolithophorids. "Meteor" *Forschung Ergebnisse, Reihe D*, **33**: 37-69.