

**Anfractus variabilis** MEDD, 1979

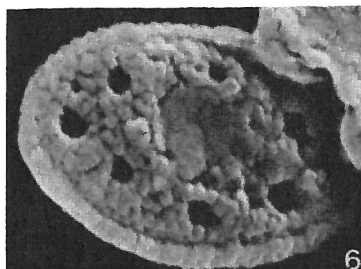


Fig. 6 — *Anfractus variabilis* sp. n.  
Holotype, distal view. Middle Oxford Clay, Gamlingay Borehole at 140 feet (42.68 m). SAC 238. SEM 73/4949,  $\times 30,000$ .

**Description:**

Diagnosis: A species of *Anfractus* with a single ring of 8-10 large pores in the central complex.

Description: Elliptical coccoliths with an eiffellithid rim which consists of two rings of small plates with a zig-zag suture between them. The central area consists of a reticulate network of small tabular elements which also form a very broad shallow open stem. There is one ring of 8-10 large pores within the central area.

Dimensions:  $1.8 \times 1.2 \mu$ .

**Remarks:**

This species differs from *A. harrisonii* MEDD in the smaller number of larger pores arranged in one ring.

**Type level:**

Callovian.

Depth of 140 feet (42.67 m), Middle Oxford Clay.

**Type locality:**

Gamlingay Borehole, Cambridgeshire, England.

**Depository:**

Institute of Geological Sciences, Leeds, England.  
Holotype: SEM 73/4949.

**Author:**

Medd A. W., 1979, p. 38; pl. 1, fig. 6.

**Reference:**

The Upper Jurassic coccoliths from the Haddenam and Gamlingay boreholes (Cambridgeshire, England). *Eclogae geol. Helv.*, vol. 72, no. 1, pp. 19-109, 11 pls.