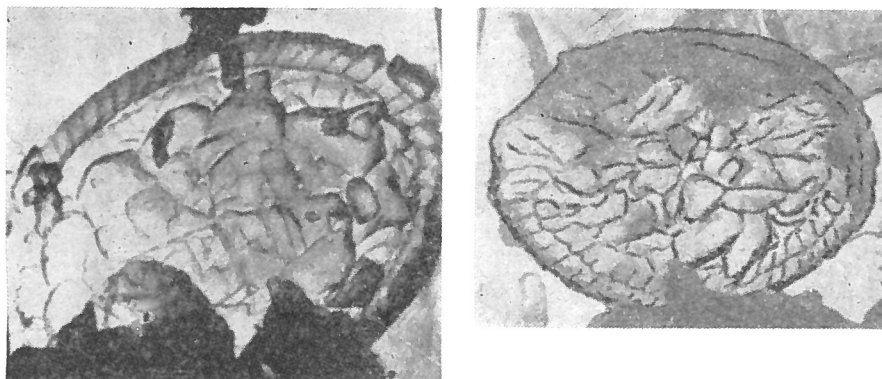


Arkhangelskiella clivosa SHUMENKO, 1969



Figs. 6, 7 — *Arkhangelskiella clivosa* n. sp.; 6) holotype, final growth stage, x 8000, Sumy District, Maastrichtian; 7) paratype, intermediate growth stage, x 6000, Staryy Oskol District, Lower Turonian.

Description:

Elliptical, slightly convex coccoliths. Growth cycle as in the preceding species. At the late stage the central area is composed of irregular crystallites arranged crosswise and is intersected by two mutually perpendicular sutures, not always clearly expressed (fig. 7). At the periphery of the central area large, angulose, convex crystallites can be distinguished. Outer margin of coccolith (limbus) represented by a double serrate boss, with acute, asymmetrical teeth (the outer ones displaced in the clockwise direction). In some specimens openings are observed passing through the central area.

Dimensions: Major diameter up to 0.006 mm, ratio of axes of elliptical section 5.5:4.

Remarks:

Distinguished from *A. cymbiformis* and other species of this genus by the hummocky structure of the central area and also by the characteristic double boss.

Type level:

Maastrichtian.

Geologic range: Lower Turonian - Lower Maastrichtian.

Type locality:

Sumy District, U.R.S.S.

Geographic range: Southern Russian Platform.

Depository:

Department of Petrography, University of Kharkov. Holotype: KhGU 1/27-4d.

Author:

Shumenko S. I., 1969, p. 5; pl. 1, figs. 6, 7.

Reference:

Electron Microscopy of Late Cretaceous coccoliths of the Russian Platform. *Paleont. Journal*, vol. 3, n° 2, pp. 3-14, pls. 1, 2.

(Translation from Russian published by the American Geological Institute).