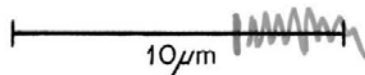
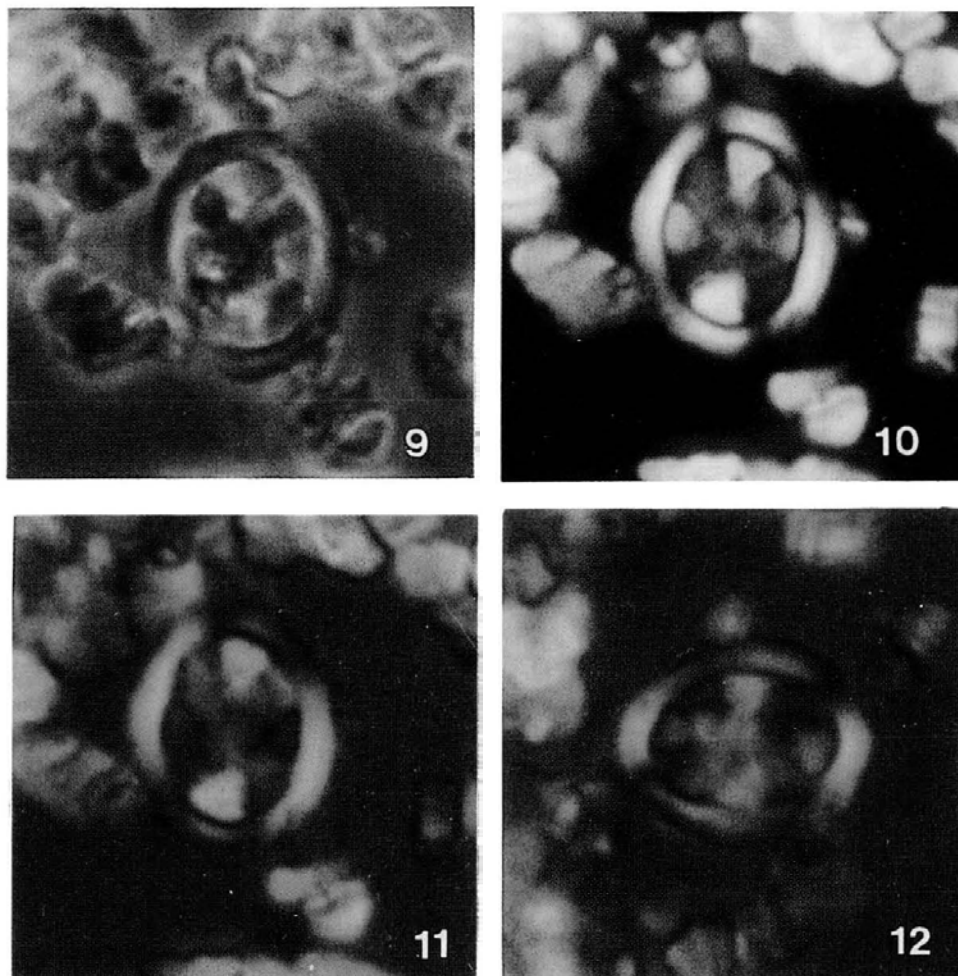


9. *Arkhangelskiella cymbiformis* Vekshina (1959) var. NT Varol (1989)



Pl. 1, figs 9-12

This is the narrow and thin shield variation. The width of the shield is usually about 1-1.5µm. The shields become much thinner towards the outer edge, possibly as a result of having much larger distal shields than proximal ones. This variant may be initially difficult to separate from *A. cymbiformis* (Var. N) but is easily distinguished from it under cross polarised light since shields are less affected by overgrowth and much thinner towards the outer edge where they do not appear to be not as regular as in *A. cymbiformis* (Var. N). Using a gypsum plate, blues are much darker while yellows are lighter than is the case in *A. cymbiformis* (Var. N). This variation is also present throughout Campanian to Maastrichtian sediments but becomes common to abundant between the evolutionary appearance of the *Broinsonia parca* group and the extinction *Stoverius coronatus* and *Tranolithus minimus*.

Varol, O., 1989. Quantitative analysis of the *Arkhangelskiella cymbiformis* Group and Biostratigraphic usefulness in the North Sea Area. *Journal of Micropalaeontology*, **8(2)**: 131-134.