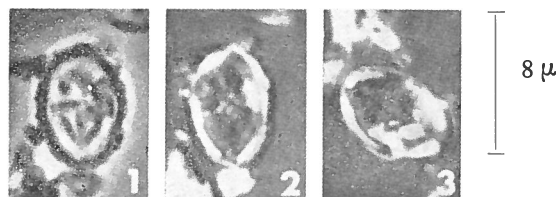


Arkhangelskiella primitiva WORSLEY, 1971



Figs. 1-3 — *Arkhangelskiella primitiva*, n. sp., proximal view. 1) micrographed in phase contrast illumination; 2) micrographed in cross polarized light with long dimension of specimen parallel to one vibration direction; 3) micrographed in cross polarized light with long dimension of specimen 45° to the vibration directions; (1-3) Holotype UI-H-4313.

Description:

In proximal view, 3 tiers are visible along the margin. The imperforate central area is about $\frac{1}{2}$ the diameter of the coccolith and contains two prominent ridges, one parallel to the long axis and the other slightly offset from the short axis.

Remarks:

A. primitiva resembles *A. concava* GARTNER and *A. cymbiformis* VEKSHINA but the dark appearance of *A. primitiva* serves to distinguish it from either of the latter.

Type level:

Hauterivian.

Type locality:

Caribbean Sea. JOIDES, DSDP, Leg 1, hole 5A, sample E.

Depository:

Department of Geology, University of Illinois, Urbana, Illinois.
Holotype: UI-H-4313.

Author:

Worsley T.R., 1971, p. 1306; pl. 1, figs. 1-3.

Reference:

Calcareous nannofossil zonation of Upper Jurassic and Lower Cretaceous sediments from the Western Atlantic. Proc. II Plank. Conf. Roma 1970, pp. 1301-1321, pls. 1, 2, 1 text-fig., 1 tab., Tecnoscienza, Roma.