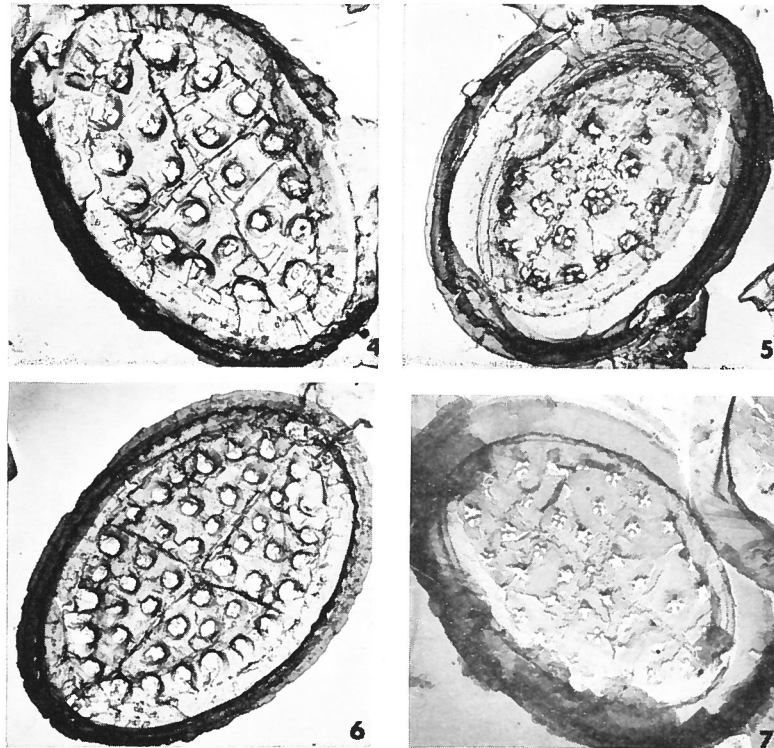


**Arkhangelskiella specillata ethmopora** BUKRY, 1969



Figs. 4-7 — *Arkhangelskiella specillata ethmopora* BUKRY, n. ssp., 4) distal view, x 6140; 5) proximal, x 5810; 6) holotype, distal, x 5400; 7) proximal, x 4660.

**Description:**

Processes that symmetrically divide perforations of the central area distinguish this subspecies, 3 to 6 processes meeting at center of each perforation to form sets of lesser perforations.

Maximum diameter: 8,6  $\mu$ .

**Type level:**

Early Campanian (Lower Taylor Marl).

Known range: Campanian.

**Type locality:**

Lake Waxahachie, Ellis County, Texas, U.S.A.

**Depository:**

Geology Department of the University of Illinois, Urbana, Illinois. Holotype, UI-H-3185 distal view (fig. 6). Primary paratype, UI-H-3184 proximal view (fig. 7). Other paratypes: UI-H-3184, UI-H-3186, UI-H-3187.

**Author:**

Bukry D., 1969, p. 21; pl. 1, figs. 4-7.

**Reference:**

Upper Cretaceous Coccoliths from Texas and Europe. Univ. Kansas Paleont. Contr., Art. 51, (Protista 2), 79 pp., 40 pls., 1 text-fig.