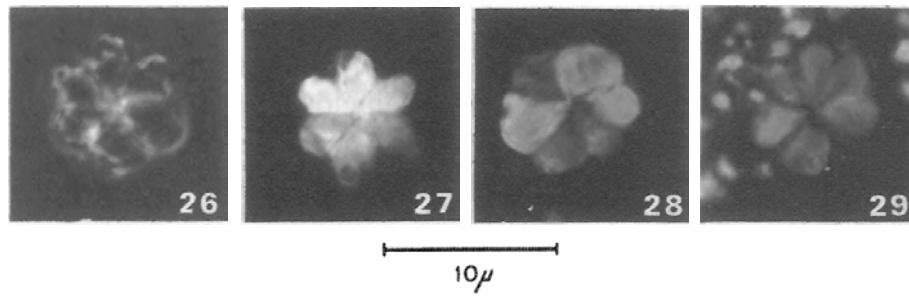


19. *Biantholithus hughesii* Varol (1987)



Pl. 12.5, figs 26-29

Diagnosis: *Biantholithus* species with six elements.

Derivation of name: in honour of Dr. G. W. Hughes, micropalaeontologist.

Holotype: Plate 12.5, Figs. 26, 27.

Type level: Lower Palaeocene (Zone NNTp1).

Type locality: Kjølby Gaard, Denmark.

Dimensions of holotype: maximum diameter 9 μm.

Remarks: *B. hughesii* is distinguished from *Biantholithus astralis* [sic] and *Biantholithus sparsus* by having only six elements. In the present study only single-cycled forms were observed; however, it is possible that well-preserved specimens may have double cycles.

Occurrence: *B. hughesii* was only observed in the North Sea area and is restricted to Zone NNTp1, Lower Palaeocene.

Varol, O., 1987. Palaeocene calcareous nannofossil biostratigraphy. In Crux, J.S. & van Heck, S.E. (eds.). Nannofossils and their Applications. Ellis Horwood, Chichester, UK, 267-310.