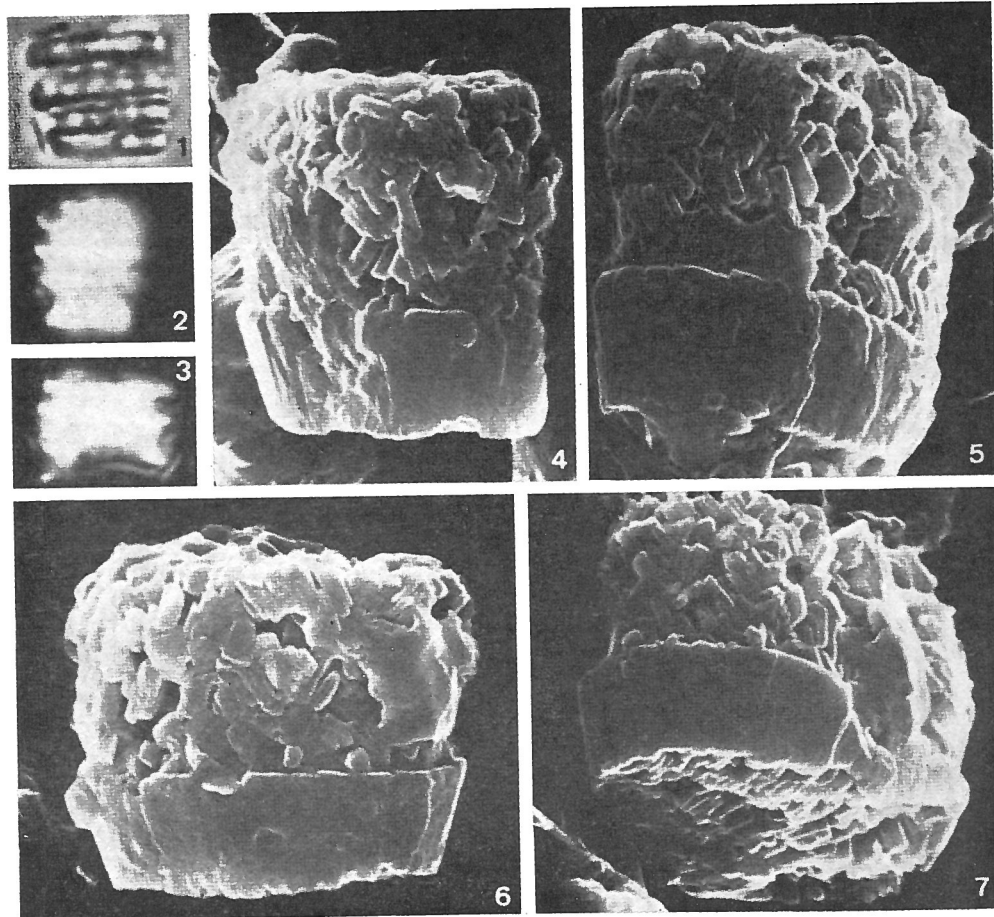


Calcicalathina alta PERCH-NIELSEN, 1979



Figs. 1-7 — *Calcicalathina alta* n. sp. LM (1-3) and SEM pictures from sample KPN 551/4 from the Lower Cenomanian of Pont du Fahs, Tunisia. Fig. 5 = holotype. 1, 2, 3) $\times 3200$; 4-7) $\times 10,000$.

Description:

Diagnosis: Form of *Calcicalathina* with a very high central area.

Description: Basket like elliptical forms with a low wall and a central area filled with calcite crystals of different orientation that rise highly above the distal margin of the wall, which consists of vertical to slightly oblique elements.

Remarks:

C. alta differs from the generotype of *Calcicalathina*, *C. oblongata*, by the high elevation of the central area. In the lightmicroscope, the first impression of *C. alta*

is that of a rectangular piece of *Schizosphaerella* or *Thoracosphaera*. But on closer inspection, especially with the use of a gypsum red I plate, the thin wall is clearly visible.

Type level:

Cenomanian.

Occurrence: Early Cenomanian through Late Cenomanian and E. Turonian (?) of Pont du Fahs, Tunisia. Not observed in other areas so far.

Type locality:

Pont du Fahs, Tunisia.

Depository:

Holotype: Pl. 2, fig. 5 (neg. 6-2822/11 ETH SEM Archive, Höggeberg, Zürich).

Author:

Perch-Nielsen K., 1979, p. 264; pl. 2, figs. 1-7.

Reference:

Calcareous Nannofossils from the Cretaceous between the North Sea and the Mediterranean. Aspekte der Kreide Europas. IUGS Series A, no. 6, pp. 223-272, 2 pls.