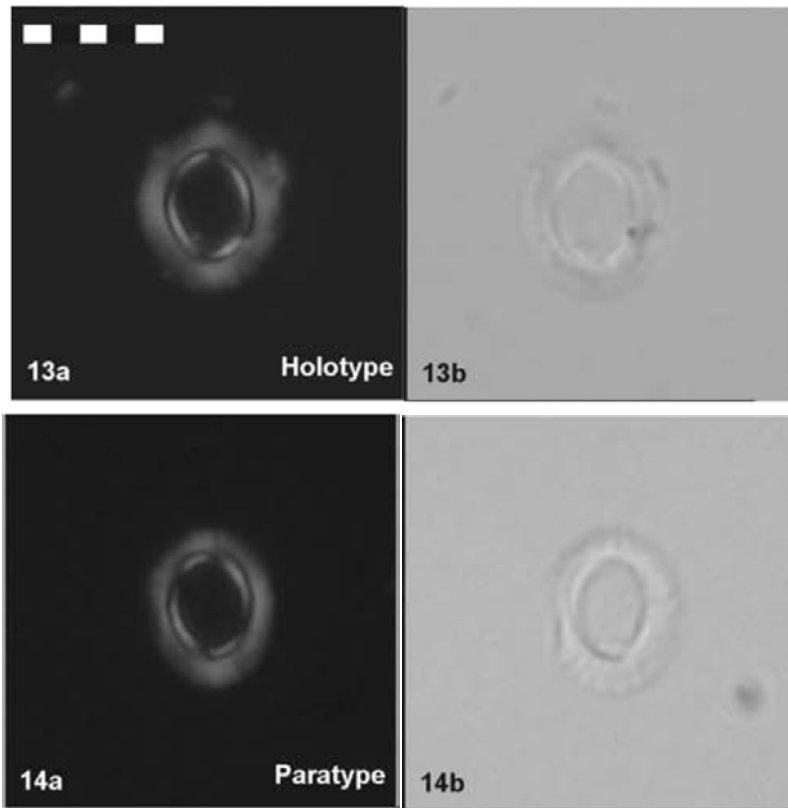


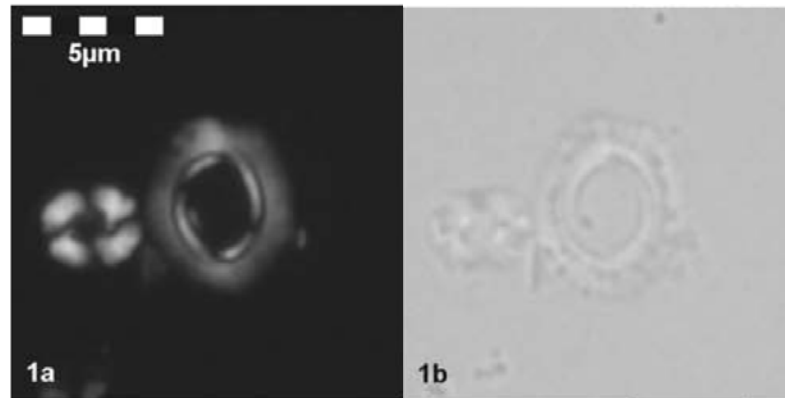
22. *Calcidiscus? ellipticus* Shamrock & Watkins (2012)



Pl. 1, figs 13, 14

Fig. 13. 17-5-49.5(1).

Fig. 14. 17-2-52.



Pl. 2, fig. 1

Fig. 1. 17-5-49.5(2).

Holotype: Plate 1, figure 13; paratype: Plate 1, figure 14; see also: Plate 2, figure 1.

Etymology: For the elliptical outline of this species.

Diagnosis: Small to medium sized, elliptical placolith with an open central-area and bright inner collar

Description: Small to medium sized, broadly to normally elliptical placolith with non-

birefringent shields and bright, narrow collar. The relatively narrow, non-birefringent shields are composed of ~35-50 slightly imbricated elements and give a smooth margin. The central-area is moderately wide and vacant, encircled by a narrow, bright inner collar. The collar shows four thin, slightly oblique isogyres, and both the inner and outer perimeters are well-defined by extinction lines in cross-polarized light.

Dimensions: Length: 4.8-7.0 μ m, μ = 5.8, s.d. = 0.6; Width: 3.7-6.0 μ m, μ = 4.8, s.d. = 0.6; Eccentricity: 1.11-1.38, μ = 1.22, s.d. = 0.1; CA (% of size): 40-59%, μ = 49.3%, s.d. = 0.3; N = 30 for all data.

Remarks: This species is tentatively placed into the genus *Calcidiscus* due to its resemblance to *C. protoannulus*, but is readily differentiated from the round *C. protoannulus* by its elliptical outline. The LO of *C. ellipticus* n. sp. occurs at the base of CP11 and is most abundant prior to, and for a short time after, the LO of *C. protoannulus* (within CP12a). This stratigraphic relationship, in addition to the morphological similarities, makes *C. ellipticus* n. sp. a likely precursor of *C. protoannulus*. *Calcidiscus ellipticus* n. sp. was rare but consistent above CP12a.

Observed range: CP11-16a; NP14a-21.

Type Section: ODP Leg 122 Site 762C, Exmouth Plateau.

Type Level: 17-5-(49.5-50.5cm), 319.00 mbsf.

Shamrock, J.L. & Watkins, D.K., 2012. Eocene calcareous nannofossil biostratigraphy and community structure from Exmouth Plateau, Eastern Indian Ocean (ODP Site 762). *Stratigraphy*, **9(1)**: 1–54.