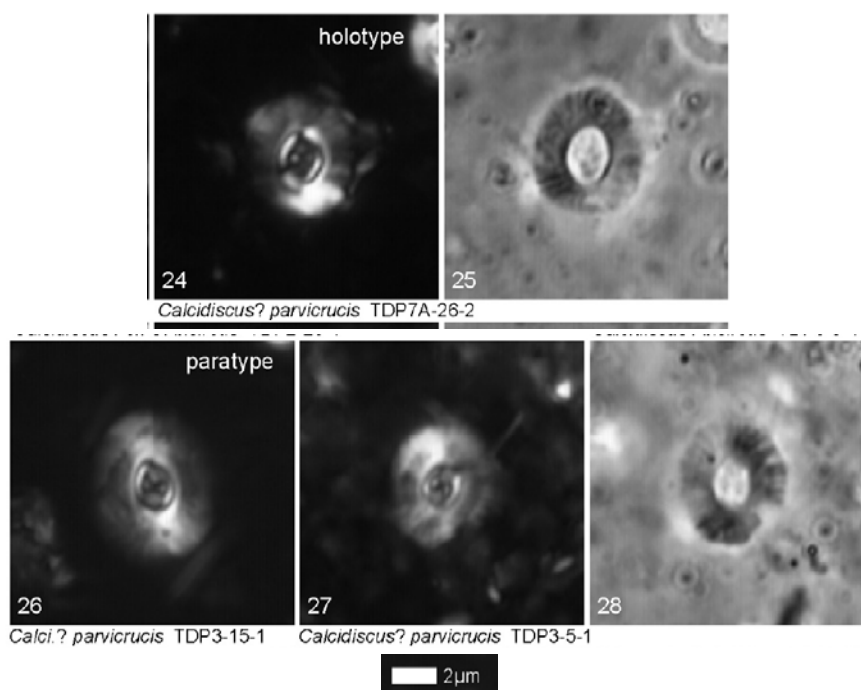


43. *Calcidiscus? parvicrucis* Bown (2005)



Pl. 9, figs 24-28.

Derivation of name: From *parvus*, meaning small, and *crucis*, meaning cross, referring to the small cross-bars that characterise this coccolith.

Diagnosis: Medium-sized (5-6µm), circular-subcircular placoliths with non-birefringent distal shield, narrow, bright tube-cycle, and narrow central-area spanned by small, axial cross.

Differentiation: Like *C.? bicircus* but with a small, axial cross.

Dimensions: L = 5.0-6.2µm.

Holotype: Pl. 9, fig. 24 (fig. 25 same specimen).

Paratype: Pl. 9, fig. 26.

Type locality: TDP Site 7A, Kwamatola, Tanzania.

Type level: Lower Eocene, Sample TDP7A-262, 35cm (Zone NP10).

Occurrence: NP10-11; TDP Site 3, 7A, 8.

Bown, P.R., 2005. Palaeogene calcareous nannofossils from the Kilwa and Lindi areas of coastal Tanzania (Tanzania Drilling Project 2003-4). *Journal of Nannoplankton Research*, **27(1)**: 21-95.