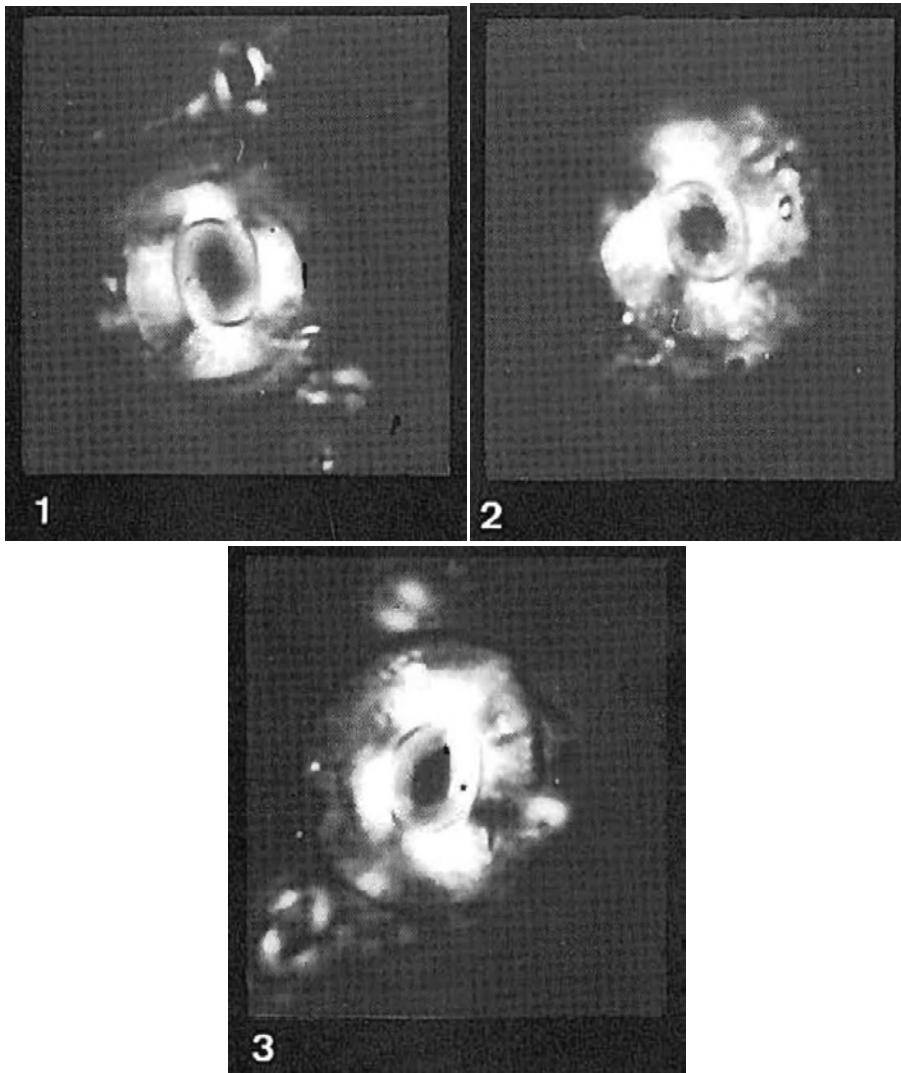


41. *Calcidiscus premacintyrei* Theodoridis (1984)



Pl. 2, figs 1-3

? *Cyclococcolithus leptoporus centrovalis* Stradner and Fuchs, 1980, partim, pl. 5, figs. 1-3, non: pl. 5, figs. 4-9, pl. 6, figs. 2-6, pl. 7, figs. 1- 6.

Etymology: From pre- and macintyrei.

Description: Large placoliths with subelliptical outline and an elliptical central tube which has a relatively large opening and usually lacks calcareous filling. The placoliths have a non-birefringent distal shield and a birefringent proximal one. The extinction bands of the birefringent proximal shield curve sinistrally in proximal view.

Differential diagnosis: *C. premacintyrei* can be distinguished from *C. macintyrei* and *C. leptoporus* by the elliptical wall, the larger central opening and the subelliptical outline. It differs from *Coccolithus pelagicus* by the more rounded outline and the sinistral

curvature of the extinction bands (in proximal view). Large species of *Reticulofenestra* differ from *C. premacintyreii* by having birefringent proximal as well as distal shields.

Remarks: Placoliths with the morphology of *C. premacintyreii* have also been reported by Bukry (1973) from his *S. heteromorphus* Zone as *C. cf. C. macintyreii* or as *C. macintyreii* with elliptic central areas.

Occurrence: The species was recorded from the *H. obliqua* Subzone to the *H. orientalis* Subzone.

Holotype: Pl. 2, fig. 1, sample: CP3656, coordinates: 108.2/4.9.

Isotypes: Pl. 2, fig. 2, sample: CP3656; Pl. 2, fig. 3, sample: MT750.

Type level: *E. musicus* Subzone.

Type locality: Giammoia 2, Sicily.

Theodoridis, S., 1984. Calcareous nannofossil biozonation of the Miocene and revision of the helicoliths and discoasters. *Utrecht Micropaleontological Bulletins*, **32**: 271pp.