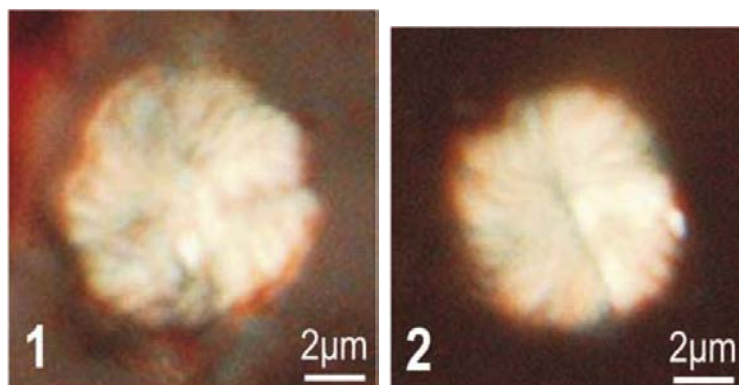


7. *Calcidiscus salamis* Fadiya (2013)



Pl. 1 figs 1-2

Fig. 1. *Calcidiscus salamis*, holotype.

Fig. 2. *Calcidiscus salamis*, paratype.

Derivation of name: This species is named after Professor Babajide Salami (Obafemi Awolowo University) in honor of his valuable contributions to the development of micropaleontology in Nigeria.

Diagnosis: Medium-sized placoliths composed of two shields with a closed central area and curved elements on the distal shield. Shields consist of strongly imbricated thread-like laths.

Description: *Calcidiscus salamis* is moderately birefringent. It is circular in outline and consists of strongly curved, overlapping thick elements woven in a wool-like manner in the distal shield. This was based on observation of 12 specimens.

Differentiation: In the LM, this species is slightly similar to *Calcidiscus fuscus* but it is bigger and lacks a central pore. Besides, *Calcidiscus salamis* has about 40 elements in its distal shield in contrast to the 10–20 elements of *C. fuscus*.

Holotype: Plate 1, figure 1 (LM).

Paratype: Plate 1, figure 2 (LM).

Dimensions: 6–8µm diameter (12 specimens)

Fadiya, L.S., 2013. Two new short-ranged *Calcidiscus* species from the offshore marine Neogene Niger Delta sequences. *Micropaleontology*, **58(6)**: 539–542.