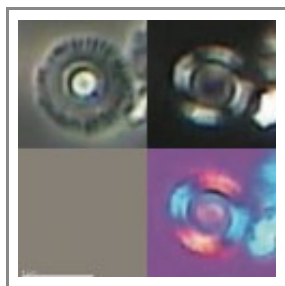


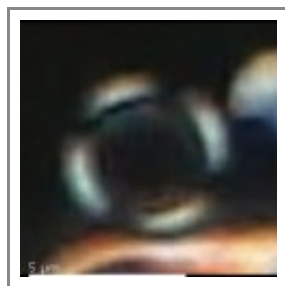
NANNOTAX CATALOG - *Calcidiscus salomonii*

Folder trail: [Farinacci](#) -> [C](#) -> [Calcidiscus](#) -> [Calcidiscus salomonii](#)

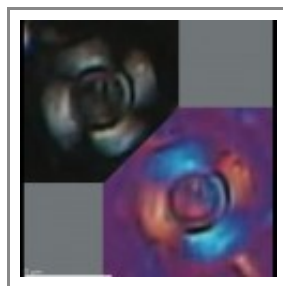
Folders this level: << < [C. randeus](#), [C. salamis](#), **[C. salomonii](#)**, [C. scullyae](#), [C. uniforatus](#),



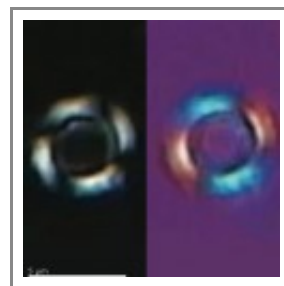
daGama & Varol 2012 pl2
13-15.jpg



daGama & Varol 2012 pl2
16.jpg



daGama & Varol 2012 pl2
17-18.jpg



daGama & Varol 2012 pl2
19-20.jpg

Current identification/main database link:

Compiled data

Citation: *Calcidiscus salomonii* da Gama & Varol 2012

Rank: Species

Type locality: Hatay, Southern Turkey

Type level: NN6

Standardised type level: 122_MIDDLE MIOCENE

Type sample: Field Sample 458, Hatay, Southern Turkey

Type repository: authors collection

Repository Country: USA

Language: EN

Original Description

Diagnosis: Small, strictly circular *Calcidiscus* whose diameter of the central opening is always greater than the width of the shields.

Description: This small species (3–6 μ m) has a non-birefringent distal shield, a tube cycle and a birefringent monocyclic proximal shield. The diameter of the central area is always greater than the width of the shield.

Size: holotype: Maximum diameter: 5.6 μ m Diameter of the central area: 1.6 μ m Diameter of the central area in polarised light: 3.6 μ m Width of the proximal shield: 1.6 μ m

Etymology: In honour of the late Ralph Salomon, nanofossil specialist and very good friend.

Extra details from original publication

Remarks: *Calcidiscus salomonii* is distinguished from *Calcidiscus tanius* by being much smaller and having a central opening always greater than the width of the shields. In *C. tanius*, the central opening is smaller than the width of the shield. *Calcidiscus tropicus* (Syn. *Calcidiscus macintyreii*) is similar to *C. tanius* but larger (>10 μ m). *C. salomonii* differs from *Calcidiscus leptoporus* by having a central opening, the latter has a closed central area. Some specimens, under polarised light, can artificially resemble *Reticulofenestra rotaria*, however *C. salomonii* is non-birefringent, whereas in *R. rotaria* the distal shield is birefringent. In addition, the *Calcidiscus* type structure is readily observed under phase contrast in *C. salomonii*.

Occurrence: *C. salomonii* is recorded from middle-upper Miocene sediments (Zone NN6 to NN11). It is reported in samples from Turkey, the Indian Ocean, the Gulf of Aden, Nigeria, Angola and offshore Vietnam.

References:

da Gama, R. O. B. P. & Varol, O. (2012). New Late Oligocene to Miocene Species. *Journal of Nanoplankton Research*. **33**(1): 1-12.
[gs](#)



nannotax

Calcidiscus salomonii. Catalog entry compiled by Anna Farinacci and Richard Howe.
Viewed: 27-10-2019

Taxon Search: [Advanced Search](#)

Link to [WoRMS](#) (World Register of Marine Species)

Powered by *Mikrotax* taxonomy content management system developed by Jeremy Young