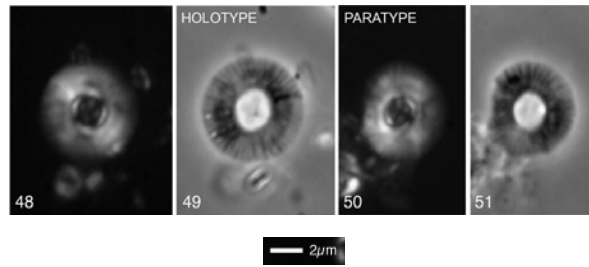


21. *Calcidiscus scullyae* Bown & Newsam (2017)



Pl. 4, figs 48–51

Figs 48, 49. 1407B-8-CC. Figs 50, 51. 1407B-8-CC.

Derivation of name: Named after Caitlin Scully (Scripps Institution of Oceanography, USA), Exp. 342 Education Officer.

Diagnosis: Medium-sized, circular-subcircular placoliths with a non-birefringent distal shield, a narrow, bright tube-cycle and narrow central-area spanned by low-birefringence crossbars.

Differentiation: Similar to *C. bicircus* but with narrow central area spanned by crossbars (see also Bown, 2005, Pl. 9, figs 21–22). *Calcidiscus parvicrucis* Bown, 2005 is elliptical, has a more distinct tube cycle and a younger range (Lower Eocene).

Dimensions: Holotype L = 6.3 μ m (Paratype L = 6.0 μ m).

Holotype: Pl. 4, figs 48–49.

Paratype: Pl. 4, figs 50–51.

Type locality: IODP Hole U1407A, NW Atlantic Ocean.

Type level: Middle Eocene, Sample U1407B-8-CC (Subzone NP14b).

Occurrence: Subzone NP14b; IODP Site U1407 (also Tanzania TDP Site U2; Bown, 2005).

Bown, P.R. & Newsam, C., 2017. Calcareous nannofossils from the Eocene North Atlantic Ocean (IODP Expedition 342 Sites U1403–1411). *Journal of Nannoplankton Research*, **37(1)**: 25–60.