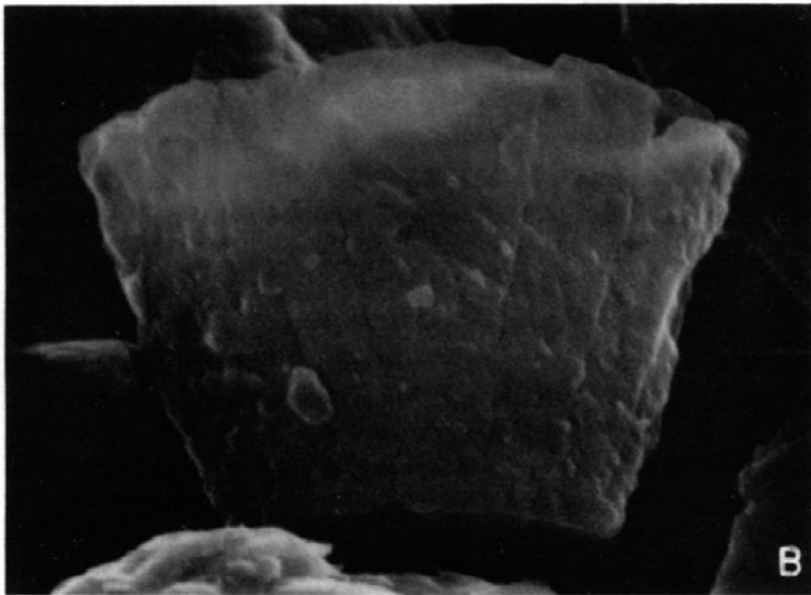
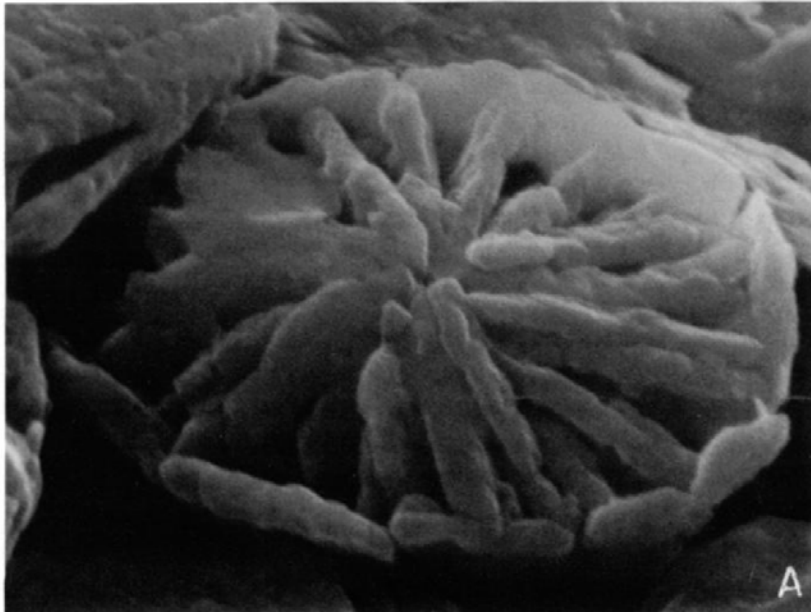
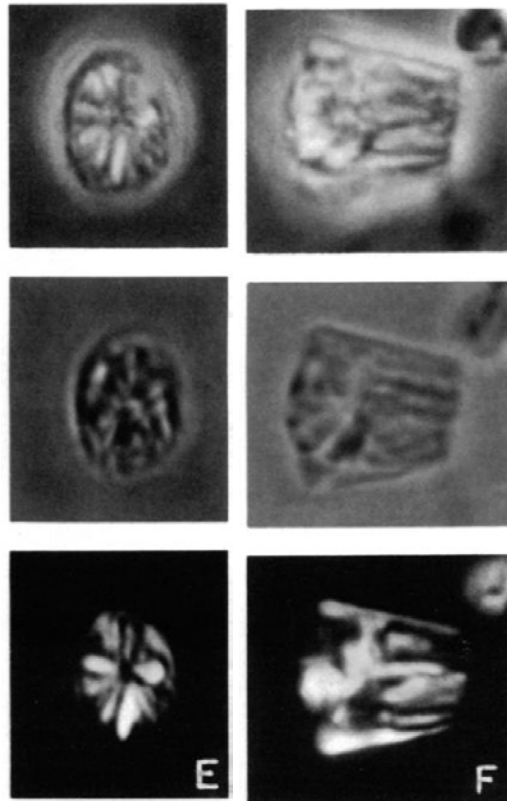
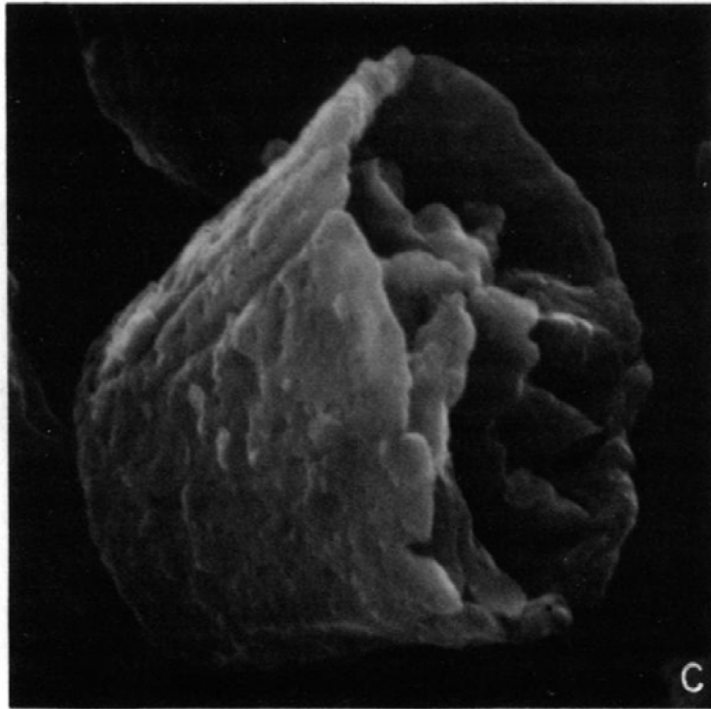


31. *Calcivascularis jansae* Wiegand (1984)





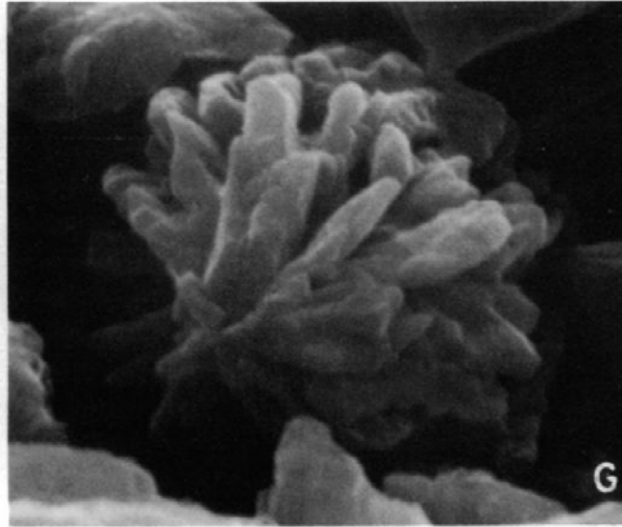


Fig. 1

Description: A species of *Calci vascularis* having the characteristics of the genus (see above).

Remarks: The top of the core may extend above the distal rim of the basket (Figure 1 D) or may be contained entirely within it (Figure 1C). The core does not appear to be strongly attached to the basket since isolated cores are sometimes observed (Figure 1G).

Occurrence: Specimens common to abundant in the upper Sinemurian to lower Pliensbachian of DSDP Hole 547B.

Holotype: Figure 1 B, C.

Paratypes: Figure 1A, D-F.

Size: Holotype: length, 2.3 μm ; width, 3.5 μm ; others: length 2.4 to 5.6 μm ; width, 3.2 to 5.6 μm .

Type locality: Sample 547B-15-2, 24-25 cm.

Wiegand, G.E., 1984. Two New Genera of Calcareous Nannofossils from the Lower Jurassic. *Journal of Paleontology*, 58(4): 1151-1155.