

Campylosphaera bramlettei KAMPTNER, 1963

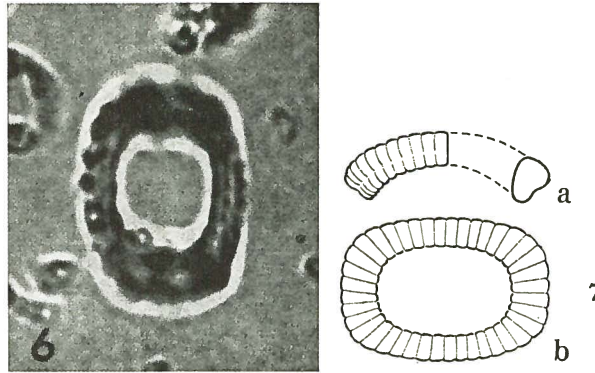


FIG. 6 — *Campylosphaera bramlettei* nov. gen. nov. spec. Mikrophotogramm
— Unterseite. Probe 24 (Eocän). x 3000.

FIG. 7a, b — *Campylosphaera bramlettei* nov. gen. nov. spec. a linke Hälfte:
Ansicht der Breitseite — rechte Hälfte: vertikaler Längsschnitt. b Oberseite.
x 3000.

Description:

Charakteristik wie bei der Gattung.

See description of *Campylosphaera* KAMPTNER, 1963.

Type level:

Paleocene (sample 25), Eocene (frequent, sample 24) and Oligocene (sample 23).

Type locality:

Material dredged by Mid-Pacific Expedition (1950), stations MP 40-1, MP 25c-1 and MP 33c (samples n° 23, 24 and 25 respectively, in Kamptner's numeration). The dredges were operated in the points 15°32' N and 177°32' W (n° 23), 19°40' N and 168°32' W (n° 24), 17°45' N and 174°16' W (n° 25) of the Mid-Pacific Ocean, at depths of 4082 m (n° 23), 1703 m (n° 24) and of 1664-1683 m (n° 25) from the sea level. The samples were collected from 56.0 to 63.5 cm (n° 23), from 50.8 to 58.4 cm (n° 24) of depth from the dredges top and in the dredge top (n° 25).

Depository:

Not given.

Author:

Kamptner E., 1963, p. 152; pl. 1, fig. 6; text-fig. 7a, b.

Reference:

Coccolithineen-Skelettreste aus Tiefseeablagerungen des Pazifischen Ozeans. Ann. Naturhist. Mus. Wien, vol. 66, pp. 139-204, pls. 1-9, text-figs. 1-39.