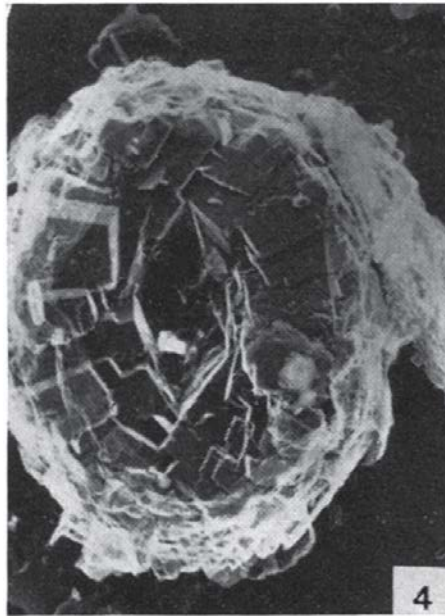


15. *Crepidolithus crucifer* Prins (1969) ex Rood et al. (1973)



Pl. II, fig. 4

Fig. 4. *Crepidolithus crucifer* Prins, distal view, Holotype 44.2.2, Lyme Regis (Dorsetshire): Lias, Lower Pliensbachian (Carixian), Bed 122a, *davoei* zone-*maculatum* subzone, x9,000.

1969 *Crepidolithus crucifer* Prins, Pl. I, Fig. 3A-B, p. 551 (invalid)

Diagnosis: A species of *Crepidolithus* with a cruciform structure in the central area.

Description: The elliptical eiffelithalid coccoliths have a moderately wide margin, varying from one fourth to one-third the width of the coccolith. A weakly developed, somewhat irregular cruciform structure is developed in the central area, the axes of the cross aligned along the major and minor axes of the ellipse.

Differentiation: The central cross, best observed between crossed polarizers serves to distinguish this species from others of the genus *Crepidolithus*.

Holotype: 44.2.2

Dimensions: length 4.35 μ , width 3.3 μ .

Type locality: Lyme Regis, Dorset.

Type level: Lias, Bed 122a, Lower Pliensbachian (Carixian), *davoei* zone

Rood, A.P., Hay, W.W. & Barnard, T., 1973. Electron microscope studies of lower and middle Jurassic coccoliths. *Eclogae Geologicae Helvetiae*, **66(2)**: 365-382.