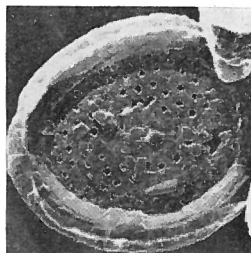


Cribrosphaera hauteriviana BLACK, 1971



8

Fig. 8 — *Cribrosphaera hauteriviana* n. sp. Compound Nodular Bed, D1, Speeton. Holotype: H.710/25092. Distal view. x 4500.

Description:

A species of *Cribrosphaera* with a petaloid rim of about 40 elements and an inner ring with a similar number of elements sloping inwards towards a flat central area with about 80 polygonal perforations.

Dimension of holotype: Distal shield $8.0 \times 6.8 \mu$, 40 rays; proximal shield $6.9 \times 6.0 \mu$; central area $5.7 \times 4.3 \mu$, with about 80 perforations. A single specimen.

Type level:

Hauterivian.

Occurrence: Compound Nodular Bed D1 at Speeton.

Type locality:

Bed D1 (Hauterivian) of the Speeton Clay at Speeton, England.

Depository:

Sedgwick Museum, Cambridge. Holotype: H.710/25092.

Author:

Black M., 1971, p. 421; pl. 33, fig. 8.

Reference:

Coccoliths of the Speeton Clay and Sutterby Marl. Proc. Yorks. Geol. Soc., vol. 38, part. 3, n° 18, pp. 381-424, pls. 30-34, 3 tables.