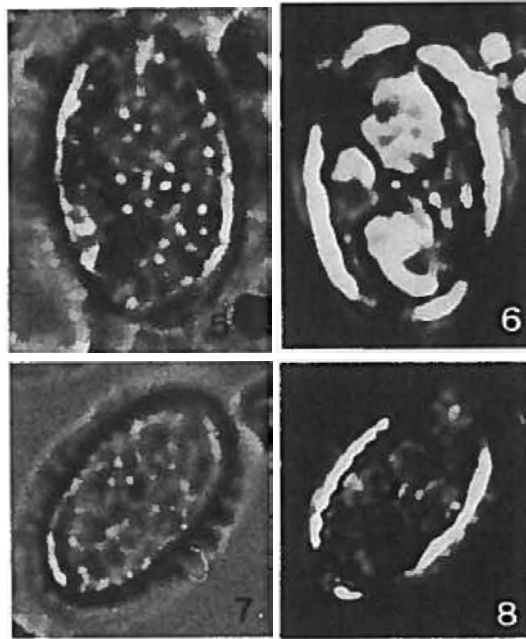


28. *Cruciplacolithus vanheckae* Perch-Nielsen (1986)





Pl. 1, Figs 1-8

1985b *Cruciplacolithus vanheckae* in PERCH-NIELSEN, p. 461. Fig. 19/41; 42; 21.

**Holotype:** Plate 1, Figures 1, 2 (negatives 6-2282/11, 12, ETH SEM Archive, Höggerberg, Zurich).

**Derivation of name:** To honour SHIRLEY VAN HECK, editor and producer of the INA Newsletter, who took it upon her to continue the "Bibliography and taxa of calcareous nannoplankton" when AL LOEBLICH and HELEN TAPPAN discontinued it.

**Type locality:** DSDP Site 356, Sao Paulo Plateau, South Atlantic (sample 356-9-2, 70 cm).

**Type level:** Middle Eocene, NP 15.

**Diagnosis:** Large, elongate form of *Cruciplacolithus* with a central cross aligned with the axis of the ellipse and nearly filling the central area.

**Description:** *C. vanheckae* has an elongate elliptical outline. The distal shield is relatively narrow, leaving a wide central area which is nearly filled by the massive central cross. Elements protruding from the wall fill the rest of the central opening. The proximal shield is smaller than the distal shield, which does not show birefringence when viewed between crossed nicols.

**Remarks:** *C. vanheckae* is larger than *C. cribellum* (Pl. 1, Fig. 9-11) from which it might have evolved. It also has an elongate shape, while *C. cribellum* has an oval outline.

**Occurrence:** *C. vanheckae* was found in the Middle Eocene zones NP 15 and NP 16 of DSDP Site 356.

Perch-Nielsen, K. 1986. New Mesozoic and Paleogene calcareous nannofossils. *Eclogae*

*Geologicae Helvetiae*, **79(3)**: 835-847.