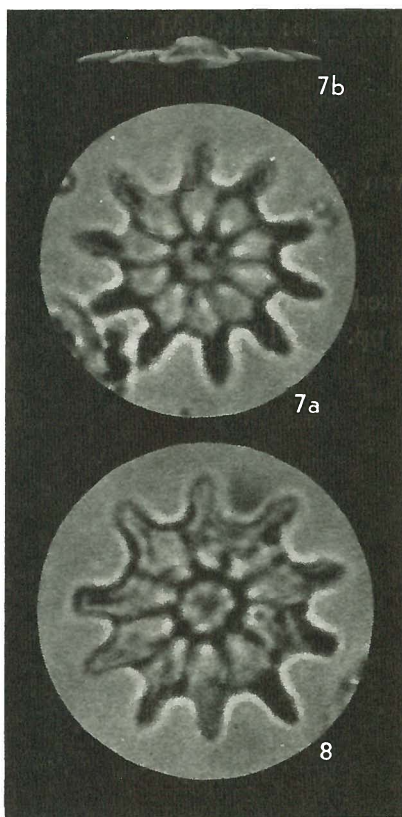


Discoaster mediosus BRAMLETTE & SULLIVAN, 1961



FIGS. 7a, b — *Discoaster mediosus* BRAMLETTE & SULLIVAN n. sp. Holotype no. 564345: a plan view; b side view drawing. x 2000 ca.

FIG. 8 — *Discoaster mediosus* BRAMLETTE & SULLIVAN n. sp. Paratype no. 564346. x 2000 ca.

Description:

Asteroliths large, having 8—10 small, nearly parallel-sided rays with rounded to somewhat pointed tips, radiating from a large central disk, one side of which has ridges intermediate to the rays and a low central knob. Diameter 11—21 μ , usually about 17 μ .

Remarks:

This species is distinguished by its large central disk and small, nearly parallel-sided rays. The intermediate ridges on the disk are usually distinct, though less so when seen through the specimen from the opposite side.

Type level:

Paleocene.

Distribution: Locally common in Unit 2 (Paleocene) and rare in the base of Unit 3 (Lower Eocene).

Type locality:

Lodo section, northwestern Fresno County, central California, U.S.A.

Depository:

U. S. National Museum. Holotype: U.S.N.M. 564345, Lodo 22; paratype: U.S.N.M. 564346, Lodo 20.

Author:

Bramlette M.N. and Sullivan F.R., 1961, p. 161; pl. 12, figs. 7a, b, 8.

Reference:

Coccolithophorids and related Nannoplankton of the early Tertiary in California. *Micro-paleontology*, vol. 7, n° 2, pp. 129-188, pls. 1-14.