

**Discoaster minimus** SULLIVAN, 1964

*Discoaster* aff. *D. mediosus* BRAMLETTE & SULLIVAN, 1961, p. 161, pl. 12, fig. 9.  
Micropaleontology, vol. 7, n° 2.

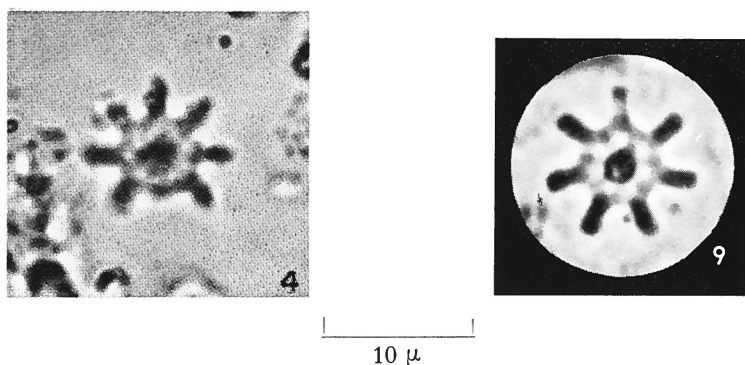


FIG. 4 — *Discoaster minimus* SULLIVAN, n. sp., U. C. loc. A-8945.  
FIG. 9 — *Discoaster minimus* SULLIVAN, n. sp. (Specimen previously published  
as mentioned in synonymy and then designated by the author as holotype of  
this new species).

**Description:**

Asteroliths small, with 7-9 parallel-sided rays, occasionally showing paired nodes and having rounded to somewhat pointed tips, radiating from a large central disk. Disk with straight to curving ridges, intermediate to the rays, radiating from a small central knob. Diameter 8-13  $\mu$ .

**Remarks:**

The asteroliths of this species differ from those of *Discoaster mediosus* in being distinctly smaller and in having fewer rays, which are longer in relation to the diameter of the central disk. This form also ranges higher in the column than the larger species.

**Type level:**

Lower Eocene.

**Type locality:**

Lodo section, northwestern Fresno County, central California, U.S.A.

**Depository:**

U. S. National Museum. Holotype: U.S.N.M. 564347, Lodo 38.

**Author:**

Sullivan F. R., 1964, p. 191; pl. 11, fig. 4.

**Reference:**

Lower Tertiary nannoplankton from the California Coast Ranges. I. Paleocene. Univ. Calif. Publ. Geol. Sci., vol. 44, n° 3, pp. 163-227, pls. 1-12, 1 text-fig., 1 fig. and 3 tables in pocket.