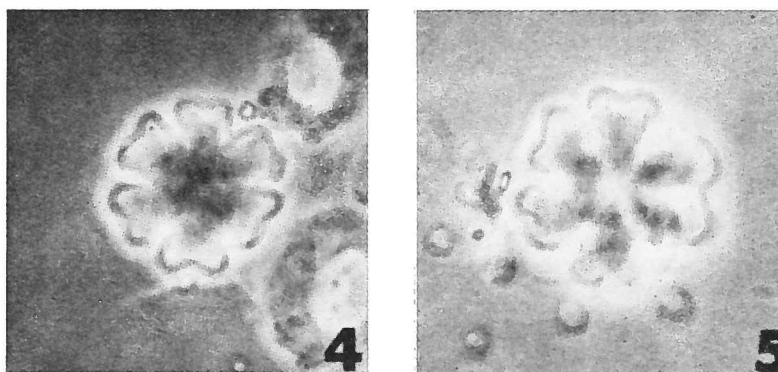


Discoaster nephados HAY, 1967

Discoaster sp. (*deflandrei*-group) Martini 1965 Proc. 17th Sym. Colston Res. Soc., p. 406, pl. 37, fig. 6.



FIGS. 4, 5 — *Discoaster nephados* HAY, n. sp. 4. Holotype UI-H-3757, JS 1840 (= K. 9397 of Bolli, 1957b; type locality of the *Catapsydrax stainforthi* Zone), Trinidad; 5. Paratype UI-H-3758, JS 1842, about 300 feet northeast of JS 1840, *Catapsydrax stainforthi* Zone. Light micrographs, phase contrast illumination, 2000 x.

Description:

Diagnosis: Asteroliths with six broad, gently bifurcate rays separated by shallow interray areas.

Description: The rays are broad and short; they expand slightly distally, and the terminations are slightly indented, producing the effect of a shallow bifurcation. The interray areas are narrow and shallow, extending less than half way in to the center. Sutures in the central area are weakly developed.

Diameter of holotype: 12 μ .

Diameter of paratype: 13 μ .

Remarks:

This species is related to *Discoaster woodringi* BRAMLETTE & RIEDEL, but differs in having ray tips slightly concave. The interray spaces are deeper than in *Discoaster lidzi* HAY, n. sp.

Type level:

Catapsydrax stainforthi Zone (Type locality), Miocene.

Distribution: Found in the *Catapsydrax dissimilis* and *Catapsydrax stainforthi* Zones.

Type locality:

Cipero type section, near south end; south Trinidad. N : 227300 links; E : 352900 links.
(JS 1840 = K. 9397 of Bolli, 1957b).

Depository:

Department of Geology, University of Illinois, U.S.A. Holotype: UI-H-3757; paratype:
UI-H-3758.

Author:

Hay W. W. in Hay, Mohler, Roth, Schmidt and Boudreaux, 1967, p. 452; pl. 2, figs. 4, 5.

Reference:

Calcareous Nannoplankton Zonation of the Cenozoic of the Gulf Coast and Caribbean-Antillean Area and Transoceanic Correlation. Gulf Coast Assoc. Geol. Societies, Transactions, vol. 17, pp. 248-480, pls. 1-13.