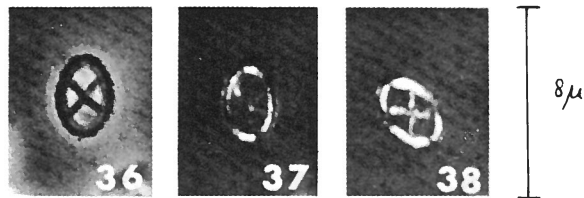


**Ellipsochiastus quadriserratus** WORSLEY, 1971



Figs. 36-38 - *Ellipsochiastus quadriserratus*, n. sp. 36) phase, 37)  $\times$ -90, 38)  $\times$ -45; Holotype UI-H-4326.

**Description:**

*Ellipsochiastus quadriserratus* has a serrate double rim composed of about 20 elements. The crossbars are aligned  $45^\circ$  from the axes of the elliptical outline.

**Type level:**

Hauterivian.

Occurrence: Berriasian-Hauterivian.

**Type locality:**

Caribbean Sea . JOIDES, DSDP, Leg 1, hole 5a.

**Depository:**

Department of Geology, University of Illinois, Urbana, Illinois.

Holotype: UI-H-4326.

**Author:**

Worsley T.R., 1971, p. 1308; pl. 1, figs. 36-38.

**Reference:**

Calcareous nannofossil zonation of Upper Jurassic and Lower Cretaceous sediments from the Western Atlantic. Proc. II Plank. Conf. Roma 1970, pp. 1301-1321, 2 pls., 1 text-fig., 1 tab., Tecnoscienza.