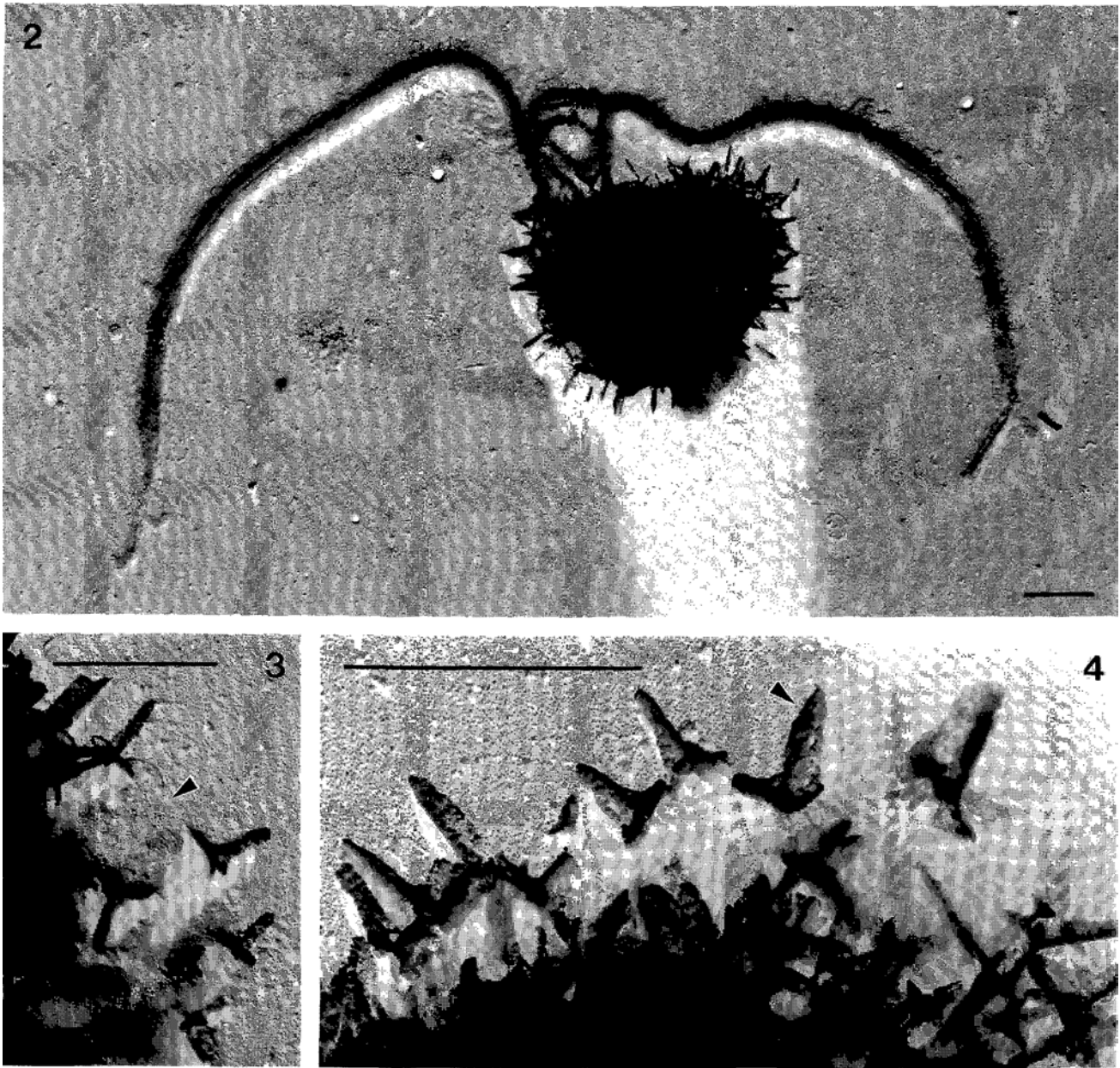


31. *Ericiolus spiculiger* Thomsen in Thomsen et al. (1995)



Figs 2-4

Figs 2-4. *Ericiolus spiculiger* gen. et sp. nov. from the Isefjord, Denmark; shadowcast preparations for TEM.

Fig. 2. Complete specimen with curved flagella and coiling haptonema.

Fig. 3. Detail of periplast showing caltrops and unmineralised scales with concentric ridges (arrowhead).

Fig. 4. Caltrops; the arrowhead points to a distinct ridge. Scale bars represent 1 μm .

Etymology: Latin *spiculum*: spike; *-ger*: carrying.

Diagnosis: Cellula ephippioides, 3.0-3.8 μm longa et lata, flagellis binis subaequalibus circiter 12 μm longis, haptonemate dimidia fere eorum longitudinis. Squamae non calcificatae ovales, circiter 0.5 x 0.4 μm magnae, concentric striatae. Spicula quadribrachiata calcificata monomorpha numerosa totam cellulam induentia;

quidque e tribus brachiis paene horizontalibus subaequalibus 0.1-0.2 μm longis et brachio unico erecto 0.3-0.4 μm longo angulospaulum plus quam 90 graduum cure illis formante constitutum. Omnia brachia porcas longitudinales exhibentia. Die 29 Augusti anni 1985 in aqua temperaturae 18-2 graduum Celsii et salinitatis 16.5‰ e summo marl Sinus Codani (lat. bor. 56°00, long. orient. 11°51.0) haustus, figuris 2-4 monstratus. Holotypus a Fig. 2 constitutus.

Cell saddle-shaped, 3"0-3"8#m, with two almost equally long flagella (c. 12 μm) and a coiling haptonema of about half this length. Organic base plates oval (c. 0.5 x 0.4 μm) and with concentric striations. Numerous calcified structures (caltrops) of one type cover the entire cell body. Each caltrop consists of 4 spikes of which the 3 proximal ones are of almost the same length (0.1-0.2 μm) and radiate in the same plane from a common centre. The angle between this plane and the outwardly projecting longer spike (0.3-0.4 μm) differs slightly from 90°. The spikes all have longitudinal ridges.

Holotype: Fig. 2.

Habitat: The type material was collected on 29 August 1985 from station 7, southern Kattegat, Denmark (56°00N/11°51.0E; surface sample; 18'2°C; 16.5‰ S).

Thomsen, H.A., Bjørn, P. de P., Højlund, L., Olesen, J. & Pedersen, J.B, 1995. *Ericiolus* gen. nov. (Prymnesiophyceae), a new coccolithophorid genus from polar and temperate regions. *European Journal of Phycology*, **30(1)**: 29-34.