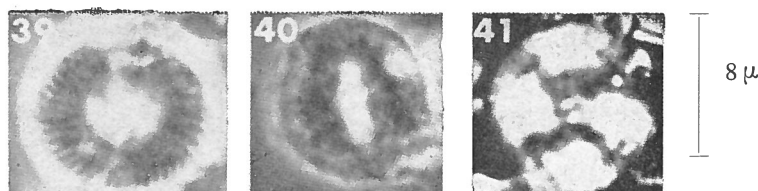


**Esgia junior** WORSLEY, 1971



Figs. 39-41 — *Esgia junior*, n. sp. 39) Holotype UI-H-4327 micrographed in phase contrast illumination; 40) micrographed in phase contrast illumination; 41) circular specimen micrographed in cross polarized light. (40, 41) Paratype UI-H-4328.

**Description:**

Circular to elliptical placoliths with closely appressed shields containing about 50 slightly curved elements inclined clockwise in proximal view. The birefringence is weak and the extinction lines are sinistrally inclined in proximal view. A prominent central pore is visible in cross polarized light.

**Remarks:**

Both the circular and elliptical forms of *E. junior* are referred to the same species because a complete transitional series exists between them.

**Type level:**

Kimmeridgian-Portlandian.

**Type locality:**

Caribbean Sea. JOIDES, DSDP, Leg 1, hole 4.

**Depository:**

Department of Geology, University of Illinois, Urbana, Illinois.  
Holotype: UI-H-4327; paratype: UI-H-4328.

**Author:**

Worsley T.R., 1971, p. 1310; pl. 1, figs. 39-41.

**Reference:**

Calcareous nannofossil zonation of Upper Jurassic and Lower Cretaceous sediments from the Western Atlantic. Proc. II Plank. Conf. Roma 1970, pp. 1301-1321, pls. 1, 2, 1 text-fig., 1 tab., Tecnoscienza.