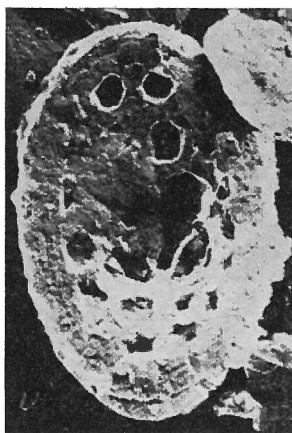


Ethmorhabdus anglicus ROOD, HAY & BARNARD, 1971



8

Fig. 8 — *Ethmorhabdus anglicus* n. sp. Proximal side. Holotype: 36.11.1. Millbrook (Bedfordshire); *mariae* zone - *scarburgense* subzone (4780). x 10,100. Electron micrograph of platinum-shadowed carbon replica.

Description:

Diagnosis: A species of *Ethmorhabdus* with only two cycles of large perforations.

Description: Elliptical podorhabdid coccoliths with two cycles of perforations, the outer cycle with about 16 openings, the inner cycle with about 8. The openings are polygonal, about 0.5 μm in diameter. A central stem is present.

Size: Length 5.0 μm , width 4.1 μm .

Remarks:

This species is distinguished from *E. gallicus* NOËL by having only about half as many perforations.

Type level:

Oxfordian, *mariae* zone - *scarburgense* subzone (4780).

Type locality:

Millbrook (Bedfordshire), England.

Depository:

Micropaleontology Department, University College, London. Holotype: 36.11.1; paratype: 32.1.2.

Author:

Rood A.P., Hay W.W. and Barnard T., 1971, p. 263; pl. 3, fig. 8.

Reference:

Electron microscope studies of Oxford Clay Coccoliths. *Eclogae geol. Helv.*, vol. 64, n° 2, pp. 245-272, pls. 1-5, 3 text-figs.