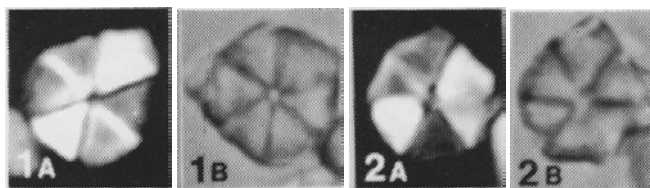


36. *Hexalithus strictus* Bergen (1994)



Pl. 1, figs 1a-b, 2a-b

Derivation of name: Latin. *strictus* = straight.

Diagnosis: A species of *Hexalithus* with triangular-shaped elements (*i.e.* their peripheries are straight).

Description (LM only): Medium-sized, nannolith constructed of six, triangular, non-imbricated elements separated by radial sutures. The individual element peripheries are straight, giving the nannolith a hexagonal, peripheral outline. Size of observed specimens: 4.8-6.0 μ m.

Remarks: *Hexalithus noelae* Loeblich & Tappan, 1966 has elements with lobate peripheral margins. *Hexalithus strictus* has a younger appearance and extinction.

Range: earliest Berriasian; DSDP Site 534 (55% Sa): Cores 92-4, 147-148cm to 89-4, 35-36cm; SE France: Le Pouzin-Route de Grads, Bed 25 (*jacobi* SZ) and Bed 27 (*grandis* SZ); Broyon, 19.5m, (0.5m below *grandis* SZ).

Holotype: Plate 1, figs. 1a-b; DSDP Site 534, 91-4, 131-132cm; lower Berriasian.

Bergen, J.A., 1994. Berriasian to Early Aptian calcareous nannofossils from the Vocontian Trough (SE France) and Deep Sea Drilling Site 534: New nannofossil taxa and a summary of low-latitude biostratigraphic events. *Journal of Nannoplankton Research*, **16(2)**: 59-69.